

# S T O N C R E T E



*[ Here, two different  
starting points, stone  
and concrete, have*



*been combined  
to create a highly  
original and expertly  
amalgamated  
aesthetic and graphic  
mixture. ]*







# STONCRETE

## Two in one

**Un gusto morbido e contemporaneamente forte che si addice sia a coloro che sono alla ricerca di una soluzione pietra non fortemente caratterizzata, sia per chi sta cercando un effetto cemento non banale.**

**Stoncrete volutamente si posiziona in un'area di gusto molteplice, da una parte la pietra e dall'altra il cemento, per rispondere a esigenze estetiche differenti, rappresentando così una soluzione adatta per più contesti, residenziali e non, garantendo una piena continuità tra indoor e outdoor.**

---

The resulting style is both gentle and strong, which makes it ideal for anyone looking for a subtle stone solution or an original concrete effect.

Stoncrete is deliberately positioned in a multiple taste area that includes both stone and, concrete, in order to meet different style requirements. This makes it a solution that can adapt to a wide range of residential and non-residential contexts as well as guaranteeing complete continuity between indoors and outdoors.









STCR 12G RM  
STCR R60G RM



STCR 12G RM









STCR2 90AG RM







STCR 90AG RM



STCR 12AG RM



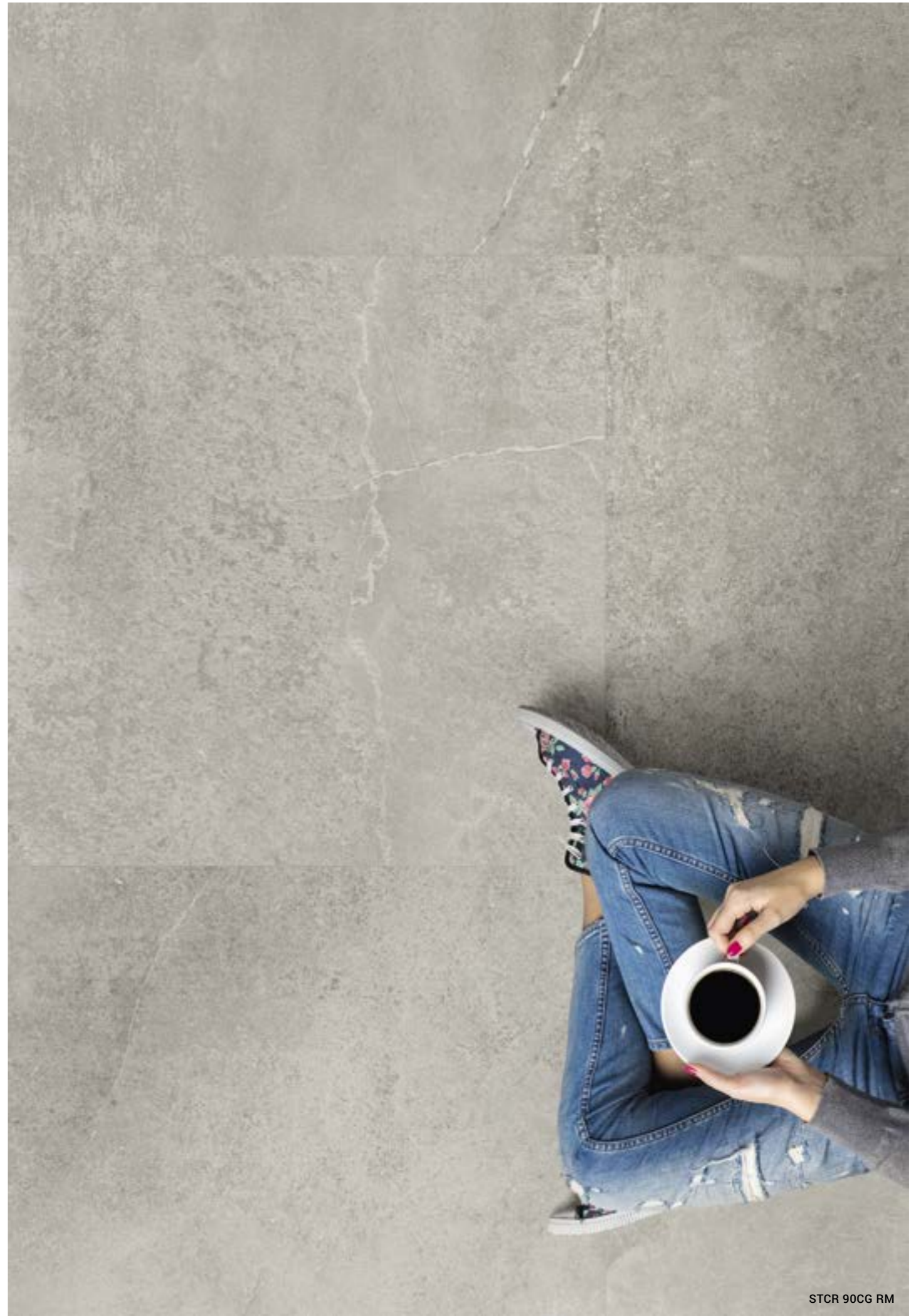


STCR DK12CG / RAME L0,5x15



STCR 12AG RM / STCR 12G RM

























STCR 90DG RM



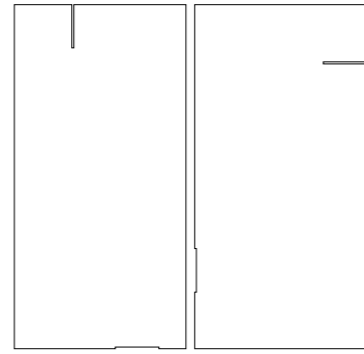
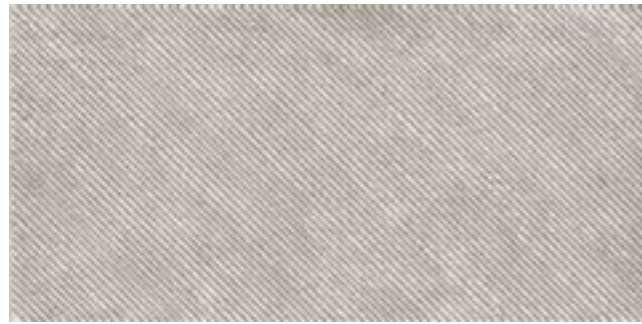
STCR 12DG RM







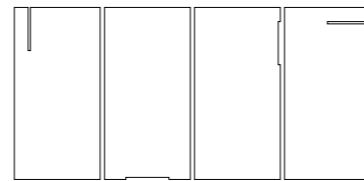
GRES PORCELLANATO A MASSA COLORATA  
COLOURED BODY PORCELAIN TILE



TITANIO L0,5X15 Δ  
0,5X15-0,2"X6"

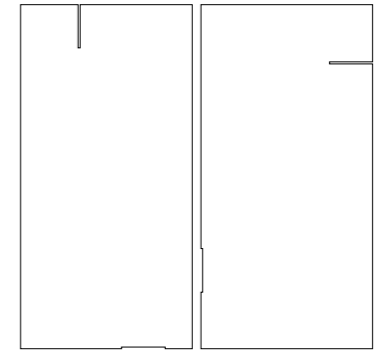
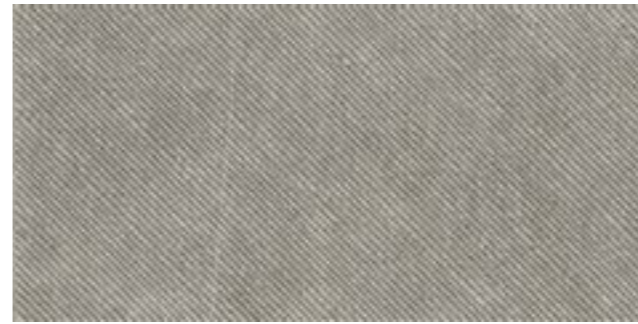
STCR DK12CG  
60X120-24"X48"

OTTONE L0,5X15 Δ  
0,5X15-0,2"X6"



RAME L0,5X15 Δ  
0,5X15-0,2"X6"

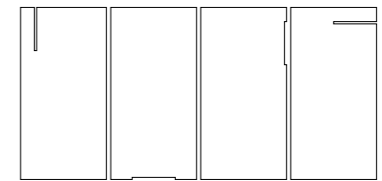
STCR DK36CG  
30X60-12"X24"



TITANIO L0,5X15 Δ  
0,5X15-0,2"X6"

STCR DK12AG  
60X120-24"X48"

OTTONE L0,5X15 Δ  
0,5X15-0,2"X6"

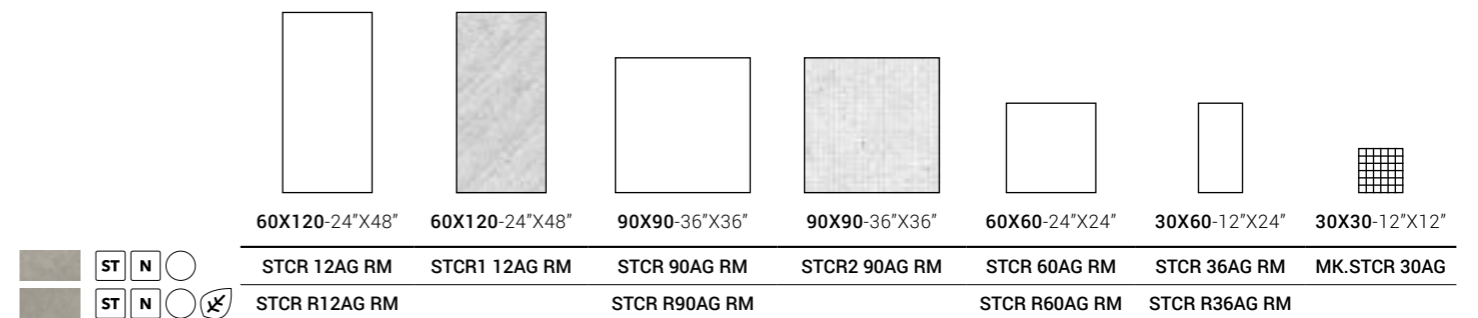
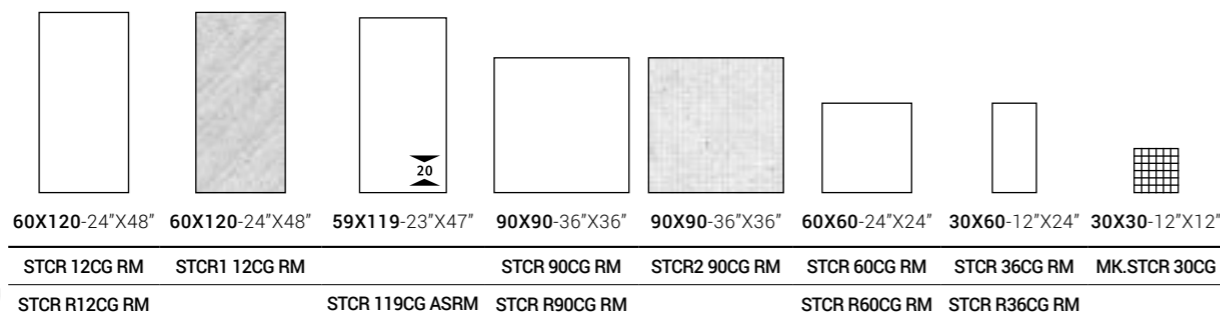


RAME L0,5X15 Δ  
0,5X15-0,2"X6"

STCR DK36AG  
30X60-12"X24"

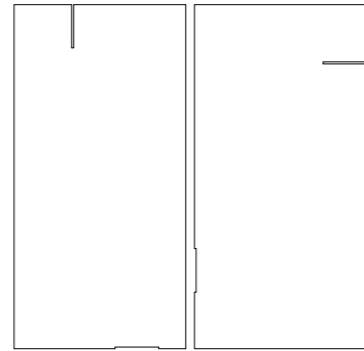
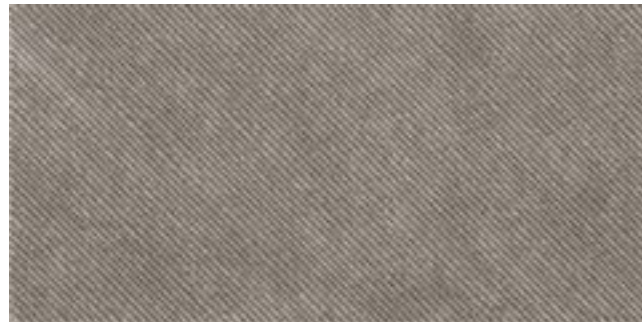
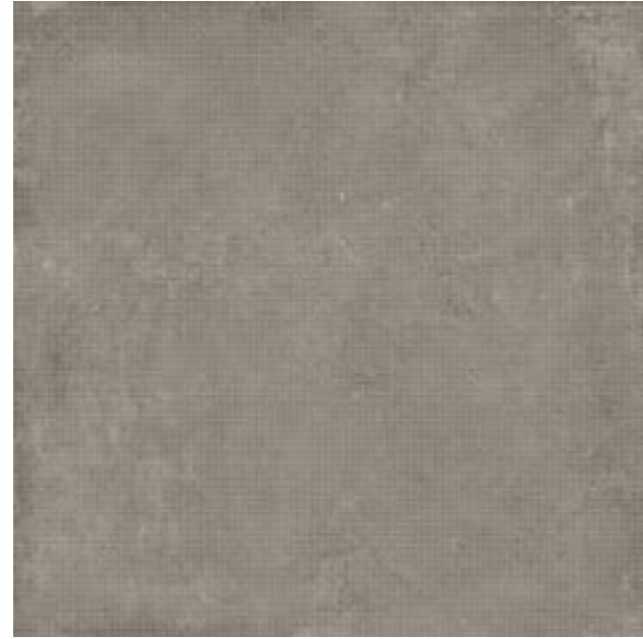
## CG

## AG





GRES PORCELLANATO A MASSA COLORATA  
COLOURED BODY PORCELAIN TILE

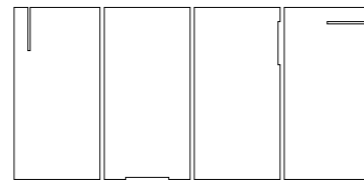


TITANIO L0,5X15 Δ  
0,5X15-0,2"X6"

STCR DK12G  
60X120-24"X48"

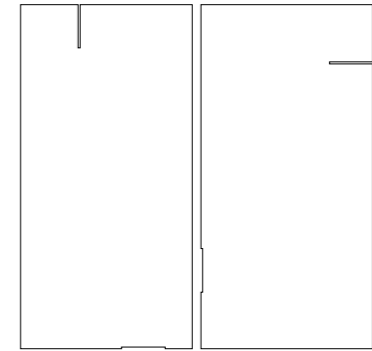


OTTONE L0,5X15 Δ  
0,5X15-0,2"X6"



RAME L0,5X15 Δ  
0,5X15-0,2"X6"

STCR DK36G  
30X60-12"X24"

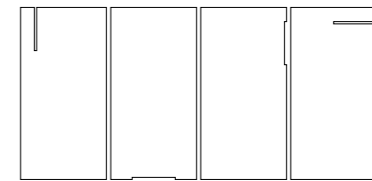


TITANIO L0,5X15 Δ  
0,5X15-0,2"X6"

STCR DK12DG  
60X120-24"X48"



OTTONE L0,5X15 Δ  
0,5X15-0,2"X6"



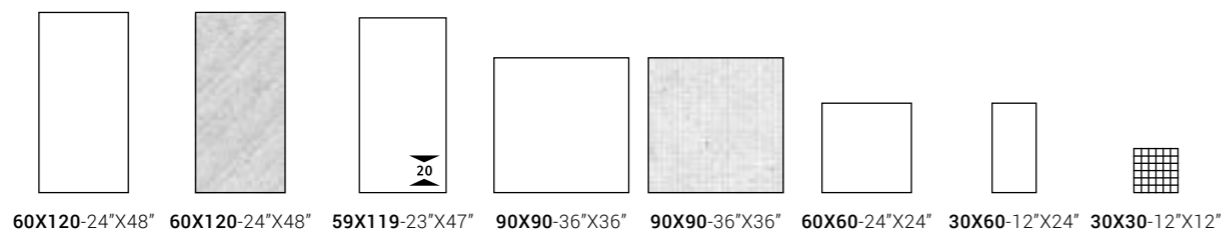
RAME L0,5X15 Δ  
0,5X15-0,2"X6"

STCR DK36DG  
30X60-12"X24"

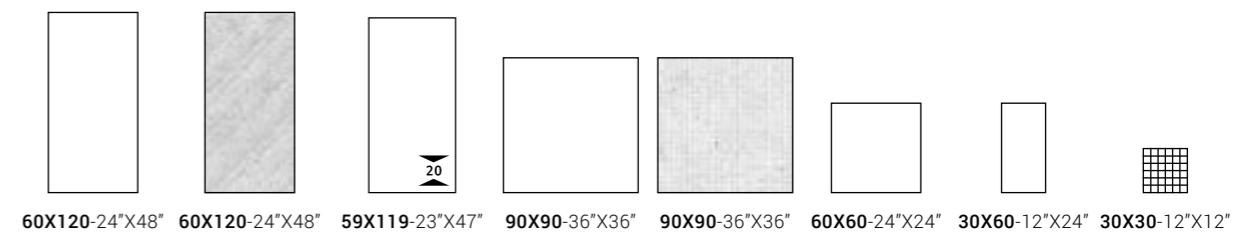


G

DG



ST	N	○	STCR 12G RM	STCR1 12G RM	STCR 90G RM	STCR2 90G RM	STCR 60G RM	STCR 36G RM	MK.STCR 30G
ST	N	○	STCR R12G RM	STCR 119G ASRM	STCR R90G RM	STCR R60G RM	STCR R36G RM		



ST	N	○	STCR 12DG RM	STCR1 12DG RM	STCR 90DG RM	STCR2 90DG RM	STCR 60DG RM	STCR 36DG RM	MK.STCR 30DG
ST	N	○	STCR R12DG RM	STCR 119DG ASRM	STCR R90DG RM	STCR R60DG RM	STCR R36DG RM		



# STONCRETE

GRES PORCELLANATO A MASSA COLORATA  
COLOURED BODY PORCELAIN TILE

## PEZZI SPECIALI / SPECIAL PIECES

	6X60-2.4"X24" △	6X90-2.4"X36" △	120X32,5-48"X12,8" △
CG	STCR BT60CG	STCR BT90CG	STCR G120CG
AG	STCR BT60AG	STCR BT90AG	STCR G120AG
G	STCR BT60G	STCR BT90G	STCR G120G
DG	STCR BT60DG	STCR BT90DG	STCR G120DG

	30X60-12"X24" △	20X60X4-8"X24"X2" △
CG	STCR S R60CG	STCR E R60CG
AG	STCR S R60AG	STCR E R60AG
G	STCR S R60G	STCR E R60G
DG	STCR S R60DG	STCR E R60DG

	59X119-23"X47" △	59X119-23"X47" △	59X119-23"X47" △
CG	STCR S119CG AS	STCR S59CG AS	STCR A119CGSXAS STCR A119CGDXAS
G	STCR S119G AS	STCR S59G AS	STCR A119G SXAS STCR A119G DXAS
DG	STCR S119DG AS	STCR S59DG AS	STCR A119DGSXAS STCR A119DGDAS

## CARATTERISTICHE TECNICHE SPECIFICHE / TECHNICAL FEATURES SPECIFICATIONS

	DIN 51130 (R)	DIN 51097 (A+B+C)	BCR REP. CEC 6/81		DM 14/6/89 N. 236		PENDULUM TEST BS (INGLESE)	PENDULUM TEST AS/NZS 4856:2004 (AUSTRALIANO)	PENDULUM TEST UNE ENV 12633:2003 (SPAGNOLO)	BOT 3000 (DCOF)
			G.A.	G.B.	C.A.	G.B.				
STCR	R10	A+B	>0.4	>0.4	>0.4	>0.4	>36	>35	2	>0,42
STCR1-2	R10	B+C	>0.4	>0.4	>0.4	>0.4	>36	>45	3	>0,42
STCR R	R11	B+C	>0.4	>0.4	>0.4	>0.4	>36	>45	3	>0,42
STCR AS	R11	B+C	>0.4	>0.4	>0.4	>0.4	>36	>45	3	>0,42



STCR1 12CG RM











BICOTTURA DA RIVESTIMENTO  
DOUBLE-FIRED WALL TILE

ISO 13006 - G - BIII GL (E ≥ 10%) UNI EN 14411 - L



**STCRWA 36CG RM**  
30X60-12"X24"



**STCRWA 36AG RM**  
30X60-12"X24"



**STCRWA1 36CG RM**  
30X60-12"X24"



**STCRWA1 36AG RM**  
30X60-12"X24"



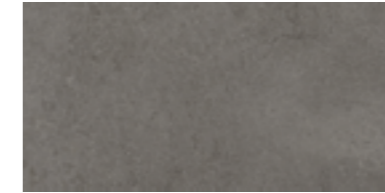
**STCRWA2 36CG RM**  
30X60-12"X24"



**STCRWA2 36AG RM**  
30X60-12"X24"



**STCRWA 36G RM**  
30X60-12"X24"



**STCRWA 36DG RM**  
30X60-12"X24"



**STCRWA1 36G RM**  
30X60-12"X24"



**STCRWA1 36DG RM**  
30X60-12"X24"



**STCRWA2 36G RM**  
30X60-12"X24"



**STCRWA2 36DG RM**  
30X60-12"X24"



STCRWA2 36CG RM












STCRWA1 36DG RM



# Caratteristiche Tecniche Gres Porcellanato

## Technical Specifications Porcelain Stoneware

UNI EN 14411 (ISO 13006) - Bla (appendice/appendix G)

CARATTERISTICA Specification	METODO DI PROVA Test methods	REQUISITI PREVISTI DALLA NORMA Requirements in accordance to the standards	VALORE MEDIO Average value
 <b>DIMENSIONI E ASPETTO</b> DIMENSIONS AND APPEARANCE	ISO 10545-2	PROSPETTO G.1 PROSPECT G.1	CONFORME COMPLIANT
 <b>ASSORBIMENTO D'ACQUA</b> WATER ABSORPTION	ISO 10545-3	≤ 0,5%	< 0,1%
 <b>RESISTENZA A FLESSIONE</b> FLEXURAL RESISTANCE		min./МИН 35 N/mm <sup>2</sup>	> 45 N/mm <sup>2</sup>
<b>SFORZO DI ROTTURA</b> MODULUS OF RUPTURE	ISO 10545-4	<b>SPESSORE / THICKNESS</b> ≥ 7,5 mm: min. 1300N	6,5 mm 1800 N* <b>SPESSORE* / THICKNESS*</b> 10 mm 3000 N* 20 mm 11000 N*
 <b>RESISTENZA ALL'ABRASIONE PROFONDA</b> DEEP ABRASION RESISTANCE	ISO 10545-6	≤ 175 mm <sup>3</sup>	< 140 mm <sup>3</sup>
<b>RESISTENZA ALL'ABRASIONE SUPERFICIALE</b> RESISTANCE TO SURFACE ABRASION	ISO 10545-7	CLASSI 0-5 CLASSES 0-5	COME INDICATO IN CATALOGO AS INDICATED IN THE CATALOGUE
 <b>COEFFICIENTE DILATAZIONE TERMICA LINEARE (α)</b> LINEAR EXPANSION THERMIC COEFFICIENT	ISO 10545-8	METODO DISPONIBILE AVAILABLE ON REQUEST	≤ 7x10 <sup>-6</sup> °C <sup>-1</sup>
 <b>RESISTENZA AGLI SBALZI TERMICI</b> RESISTANCE TO SUDDEN TEMPERATURE CHANGES	ISO 10545-9	METODO DISPONIBILE AVAILABLE ON REQUEST	RESISTE RESISTANT
 <b>RESISTENZA AL GELO</b> FROST RESISTANCE	ISO 10545-12	RICHIESTA ALWAYS TESTED	RESISTE RESISTANT
 <b>PRODOTTI CHIMICI AD USO DOMESTICO ED ADDITIVI PER PISCINA</b> HOUSEHOLD CHEMICALS AND SWIMMING POOL WATER CLEANSERS		min. B МИН. B	min. B МИН. B
<b>ACIDI ED ALCALI A BASSA CONCENTRAZIONE</b> ACIDS AND LOW CONCENTRATION ALKALIS	ISO 10545-13	DA LA, LB A LC FROM LA, LB TO LC	DA LA, LB A LC FROM LA, LB TO LC
<b>ACIDI ED ALCALI AD ALTA CONCENTRAZIONE</b> ACIDS AND HIGH CONCENTRATION ALKALIS		METODO DISPONIBILE AVAILABLE ON REQUEST	METODO DISPONIBILE AVAILABLE ON REQUEST
 <b>RESISTENZA ALLE MACCHIE UGL</b> STAIN RESISTANCE UGL		METODO DISPONIBILE AVAILABLE ON REQUEST	METODO DISPONIBILE AVAILABLE ON REQUEST
<b>RESISTENZA ALLE MACCHIE GL</b> STAIN RESISTANCE GL	ISO 10545-14	min. 3 МИН. 3	min. 3 МИН. 3

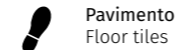
\* VALORI RIFERITI AL FORMATO 60X60 / VALUES REFERRED TO 60X60 SIZE

# Symbologia

## Symbols

### INDICAZIONI D'USO

#### INDICATIONS FOR USE



Pavimento  
Floor tiles



Rivestimento  
Wall tiles

### DESTINAZIONI D'USO

#### SUGGESTED APPLICATIONS



Abitazioni  
Domestic purpose



Commerciale leggero  
Light commercial



Commerciale  
Commercial



Esterni  
Outdoor floor

### SUPERFICI

#### SURFACES

Struttura  
Structure



Strutturato  
Slate cut

Finitura  
Finish



Naturale  
Natural

### Aspetto superficiale

#### Surface look



Opaco  
Matt

Bordo  
Edge



Rettificato monocalibro  
Monocaliber, rectified

### STONALIZZAZIONE

#### SHADE VARIATION

V2

### SPESSORE

#### THICKNESS

10 20

### CARATTERISTICHE DI VENDITA

#### SALES CHARACTERISTICS



Prodotto venduto al pezzo.  
Product sold per item.

Tutti i nostri prodotti, sia al mq che al pezzo, sono venduti unicamente a scatola completa.  
All our products are sold only in complete boxes, whether the unit of measure is per item or per square metre.



# Caratteristiche Tecniche Bicottura

## Double Firing Technical Specifications

UNI EN 14411 (ISO 13006) - Bill (appendice L)



imolaceramica.com

Coordinamento  
Marketing CC Imola

CARATTERISTICA Specification	METODO DI PROVA Test methods	REQUISITI PREVISTI DALLA NORMA Requirements in accordance to the standards	VALORE MEDIO Average value
<b>DIMENSIONI E ASPETTO</b> DIMENSIONS AND APPEARANCE	ISO 10545-2	<b>PROSPETTO L1</b> PROSPECT L1	<b>CONFORME</b> COMPLIANT
<b>ASSORBIMENTO D'ACQUA</b> WATER ABSORPTION	ISO 10545-3	> 10%	> 10%
<b>RESISTENZA A FLESSIONE</b> FLEXURAL RESISTANCE	ISO 10545-4	<b>SPESSORE / THICKNESS</b> ≥ 7,5 mm: min. 12 N/mm <sup>2</sup>	>17 N/mm <sup>2</sup>
		<b>SPESSORE / THICKNESS</b> < 7,5 mm: min. 15 N/mm <sup>2</sup>	
<b>SFORZO DI ROTTURA</b> MODULUS OF RUPTURE		<b>SPESSORE / THICKNESS</b> ≥ 7,5 mm: min. 600 N	<b>CONFORME</b> COMPLIANT
		<b>SPESSORE / THICKNESS</b> < 7,5 mm: min. 200 N	
<b>COEFFICIENTE DILATAZIONE TERMICA LINEARE (A)</b> LINEAR EXPANSION THERMIC COEFFICIENT	ISO 10545-8	<b>METODO DISPONIBILE</b> AVAILABLE ON REQUEST	≤ 7x10 <sup>-6</sup> °C <sup>-1</sup>
<b>RESISTENZA AGLI SBALZI TERMICI</b> RESISTANCE TO SUDDEN TEMPERATURE CHANGES	ISO 10545-9	<b>METODO DISPONIBILE</b> AVAILABLE ON REQUEST	<b>RESISTE</b> RESISTANT
<b>RESISTENZA AL CAVILLO</b> CRAZING RESISTANCE	ISO 10545-11	<b>RICHIESTA</b> ALWAYS TESTED	<b>RESISTE</b> RESISTANT
<b>PRODOTTI CHIMICI AD USO DOMESTICO ED ADDITIVI PER PISCINA</b> HOUSEHOLD CHEMICALS AND SWIMMING POOL WATER CLEANSERS		min. B МИН. В	min. B МИН. В
<b>ACIDI ED ALCALI A BASSA CONCENTRAZIONE</b> ACIDS AND LOW CONCENTRATION ALKALIS	ISO 10545-13	<b>METODO DISPONIBILE</b> AVAILABLE ON REQUEST	<b>METODO DISPONIBILE</b> AVAILABLE ON REQUEST
<b>ACIDI ED ALCALI AD ALTA CONCENTRAZIONE</b> ACIDS AND HIGH CONCENTRATION ALKALIS		<b>METODO DISPONIBILE</b> AVAILABLE ON REQUEST	<b>METODO DISPONIBILE</b> AVAILABLE ON REQUEST
<b>RESISTENZA ALLE MACCHIE</b> STAIN RESISTANCE	ISO 10545-14	min. 3 МИН. 3	min. 3 МИН. 3

## Symbologia

### Symbols

#### INDICAZIONI D'USO

INDICATIONS FOR USE



Rivestimento  
Wall tiles

#### DESTINAZIONI D'USO

SUGGESTED APPLICATIONS



Abitazioni  
Domestic purpose

#### SUPERFICI

SURFACES

Struttura / Structure



Strutturato  
Slate cut

Finitura / Finish



Naturale  
Natural

Aspetto superficiale / Surface look



Opaco  
Matt

#### STONALIZZAZIONE

SHADE VARIATION

V2



#### SPESSORE

THICKNESS

9,8



A brand of  
Cooperativa Ceramica d'Imola S.c.

Via V. Veneto, 13  
40026 Imola (BO) Italia  
Tel. +39 0542 601601  
Fax +39 0542 31749



I tile U