

# Apogeo14



Pubblicazione a cura di  
Publication edited by  
**Direzione marketing Tagina Ceramiche d'Arte**

Progetto grafico / Graphic design  
**33 multimedia Studio**

Fotografie / Pictures  
Render foto-realistici / Photorealistic 3D  
**33 multimedia Studio**

Stampa / Print  
**Artegraf**

Thanks to:  
**Dandy Home Collection is a Gamma International Brand**

Finito di stampare nel mese di luglio 2014  
Finished to print in the month of July 2014

# INDEX

NEW COLLECTION Apogeo14

## STILE CONTEMPORANEO

CONTEMPORARY STYLE

**06/70 ANTHRACITE**

**20 WHITE**

**24 GREY**

**30 BLACK**

## FASCINO ANTICO

ANTIQUE CHARM

**16 OLD COTTO**

**28 LIGHT BROWN**

**44 TORTORA**

**40 DARK BROWN**

## EFFETTO PIETRA

STONE EFFECT

**74 GOLDEN**

**12 SUNSET**

**32 SMALL SPACES**

**54 DECORI**

**78 MINIMALI E DATI TECNICI**



## STILE MATERICO/MATTER STYLE

### ISPIRAZIONE NATURALE/ NATURAL INSPIRATION

UNA COLLEZIONE DI PIASTRELLE IN GRES PORCELLANATO BELLE COME LA NATURA, FORTI COME IL FUOCO, UNICHE COME UN'OPERA D'ARTE. DA SCEGLIERE IN TRE DECLINAZIONI: STILE CONTEMPORANEO, FASCINO ANTICO ED EFFETTO PIETRA PER VESTIRE OGNI AMBIENTE CON UNO STILE INCONFONDIBILE: DALLA PROPRIA CASA A UNO SPAZIO PUBBLICO, DA UN LUOGO ESTERNO AD UN CENTRO BENESSERE.

NEI COLORI E NELLE TRAME APOGEO DI TAGINA RACCHIUDE LA BELLEZZA DEL MONDO NATURALE. PROPOSTA IN 3 SPESSORI: COMPACT IN 18 E 20MM PER ESTERNI E NELLO SPESSORE 10MM UTILIZZABILE ANCHE COME RIVESTIMENTO A PARETE, SI PUÒ SCEGLIERE IN 10 COLORI, CON BELLISSIMI DECORI E IN TANTISSIMI FORMATI TRA CUI L'ESAGONALE, SIA CON BORDO LINEARE CHE "IRREGOLARE".

A COLLECTION OF PORCELAIN TILES BEAUTIFUL AS NATURE, STRONG AS FIRE, UNIQUE AS A WORK OF ART. TO CHOOSE IN THREE DIFFERENT VERSIONS: CONTEMPORARY STYLE, ANTIQUE CHARM, AND STONE EFFECT TO COVER ANY ENVIRONMENT WITH A UNMISTAKABLE STYLE: FROM YOUR OWN HOUSE TO A PUBLIC SPACE, FROM AN OUTDOOR ENVIRONMENT TO A WELLNESS CENTRE.

THE COLOURS AND THE WEAVES APOGEO OF TAGINA CONTAIN THE BEAUTY OF THE NATURAL WORLD. PROPOSED IN 3 THICKNESSES: COMPACT IN 18 AND 20MM FOR OUTDOOR AND 10MM THICKNESS THAT CAN BE EMPLOYED ALSO FOR WALLS COVERING, CAN BE SELECTED IN 10 COLOURS, WITH VERY BEAUTIFUL DECORS AND A LOT OF SIZES INCLUDING THE HEXAGON ONE, BOTH WITH LINEAR AND IRREGULAR EDGE.

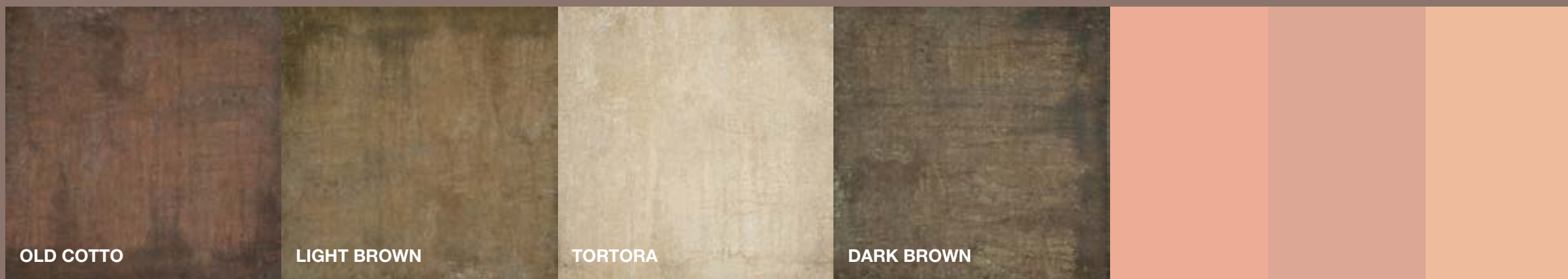


## STILE CONTEMPORANEO CONTEMPORARY STYLE

### SEGUENDO LE ULTIME TENDENZE / FOLLOWING THE LAST TENDENCIES

Nei colori più neutri, per abbinarsi ed esaltare gli arredi e le finiture di ambienti contemporanei: eleganza minimale, senza perdere il fascino della materia.

*With more neutral colours, to match and exalt the furniture and the finishes of contemporary living spaces: minimal elegance, without losing the charm of matter.*



## FASCINO ANTICO ANTIQUÉ CHARM

### CLASSICO SEMPRE ATTUALE / CLASSIC STILL UP\_TO\_DATE

Interpretazione degli ambienti con colori caldi, densi ma sempre attuali: per completare gli arredi in stile classico o dare un tocco di calore a quelli più contemporanei.

*Interpretation of the environments with warm colours, dense but always modern: to complete the furnishings in classical style or give a touch of warmth to the contemporary ones.*



## EFFETTO PIETRA STONE EFFECT

### LA MATERIA DIVENTA VIVA / MATTER BECOMES ALIVE

Nei colori della pietra, due sfumature vibranti e vitali che illuminano gli arredi ed esaltano le architetture di ogni ambiente. Una scelta perfetta soprattutto nei tagli di grandi dimensioni.

*In the stone colours, two vibrant and vital ones that enlighten the furnishings and exalt the architectures of any environment. A perfect choice especially in the big sizes..*



# THE CONTEMPORARY STYLE

APOGEO14 ANTHRACITE



no°  
9

## BOUTIQUE

COME CREARE IL PROPRIO STILE  
HOW TO CREATE YOUR OWN STYLE

La soluzione ideale per creare ambienti aperti al pubblico, come Boutique e attività commerciali in genere: elegante e non invadente, perfettamente abbinabile agli arredi contemporanei e classici, ne completa e caratterizza lo stile, resistendo all'usura del tempo.

*The best solution to create open public environments, as Boutique and commercial activities in general: elegant and not intrusive, perfectly matchable with contemporary and classic furnishings, completes and characterizes the style, resisting to timeworn.*





Apogeo14

BOUTIQUE

APOGEO14 / ANTHRACITE 46x92 fondo



no°

# LIVING

EMOZIONI DA VIVERE OGNI GIORNO  
EMOTIONS TO LIVE EVERYDAY

Il colore Sunset dona alla casa la forza e il calore della materia naturale: è in sintonia con gli arredi grazie alle sfumature cromatiche equilibrate.

*The Sunset color gives to the house the strength and the warmth of the natural matter: it's in syntony with the furnishings thanks to the balanced chromatic nuances.*



RETTIFICATO  
RECTIFIED



# Apogeo14

APOGEO14/SUNSET 90x90 fondo rettificato

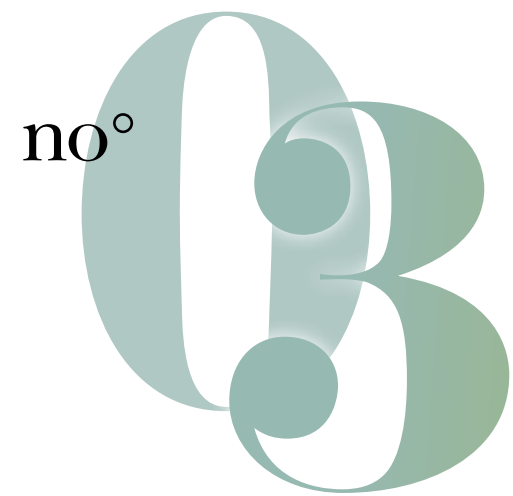
APOGEO14/SUNSET 92x92 fondo /5x60/10x60/15x60 fondo



NATURALE  
NATURAL







## BISTRO

NEI LUOGHI DELL'ACCOGLIENZA  
IN THE RECEPTION PLACES

Scelta ideale per i locali pubblici, l'Old Cotto è stato creato per stare in mezzo alla gente e donare calore e accoglienza.

*Best choice for public places the Old Cotto has been created to be together with the people and give warmth and welcome.*





Apogeo14

BISTRO

APOGEO14/OLD COTTO 22.5x90 fondo rettificato



no°  
01

## SPA

### PROGETTO BENESSERE WELLNESS PROJECT

Rivestimenti progettati per resistere all'umidità e al calore, realizzati sapientemente per essere usati ogni giorno: proposti in finiture naturali e armoniose, ideali per gli ambienti dedicati al benessere e all'accoglienza

*Wall tiles made to resist to humidity and to the heat, wisely made to be used on daily basis: proposed in natural and in harmonious finishes, ideal for environments dedicated to the wellness and reception.*





FONDO  
RIGATINO



FONDO  
RIGATINO

# Apogeo14!

## SPA

APOGEO14/WHITE 45x90 f. rett./22.5x90 f. rett./22.5x90 f. rett. rigatino

APOGEO14/WHITE 45x90 fondo rett./22.5x90 fondo rettificato





## BAGNO

PER OGN AMBIENTE DELLA TUA CASA  
FOR ANY ENVIRONMENT OF YOUR HOME

La collezione Apogeo, perfetta per pavimenti e rivestimenti, completa l'arredo della stanza da bagno, esaltandone le finiture e lo stile.

*The collection Apogeo, perfect for floors and walls covering, completes the furnishing of the bathroom, exalting the finishes and the style.*





NATURALE  
NATURAL



## BAGNO

APOGEO14/GREY 92x92 fondo

APOGEO14/GREY 90x90 fondo rettificato



# Apogeo14



RETTIFICATO  
RECTIFIED



no°



# INGRESSO ENTRANCE

INVITO A QUALCOSA DI SPECIALE  
INVITATION TO SOMETHING SPECIAL

Anche per le zone di passaggio, permette una continuità di stile  
e apre a soluzioni creative ed eleganti.

*Also for the doorway areas, allows a continuity in the style and  
opens to creative and elegant solutions.*



NATURALE  
NATURAL



## INGRESSO

APOGEO14/LIGHT BROWN 61x61 fondo

APOGEO14/LIGHT BROWN 60x60 fondo rett./7.5x60 battiscopa rettificato



# Apogeo14

RETTIFICATO  
RECTIFIED







## SMALL SPACES





## Apogeo14

APOGEO14/BLACK 61x61 fondo/7.5x61 battiscopa

# Apogeo14



APOGEO14/WHITE 90x90 fondo rett./30x60 fondo rett./10x10 Deco Perlage Deco mix

# Apogeo14

APOGEO14/SUNSET 30,5x61 fondo



Apogeo14

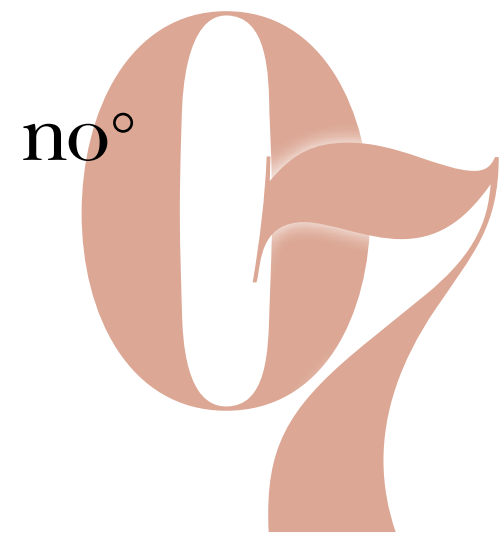


APOGEO14/GREY 30x60 fondo rett.

# THE RUSTIC STYLE

APOGEO14 OLD COTTO





## ZONA BRUNCH BRUNCH ZONE

ARREDARE GLI SPAZI DELLA QUOTIDIANITÀ  
FURNISH THE DAILY LIVING SPACES

Il Gres porcellanato non solo veste con eleganza ogni stanza completando l'arredamento, ma è funzionale e robusto all'usura, ideale per i luoghi della casa più vissuti

*The glazed porcelain not only covers with elegance each room completing the furnishing, but it's functional and sturdy to the wear, ideal for the most frequented places of the house.*





Apogeo14

ZONA BRUNCH

APOGEO14/DARK BROWN 61x61 fondo





no°



## MANSARDA

PER OGNI STILE, IL FASCINO APOGEO  
FOR ANY STYLE, THE APOGEO CHARM

Ogni ambiente acquista fascino: seguendo i tuoi gusti e il tuo stile,  
Tagina ha la soluzione mirata per ogni stanza della tua casa.

*Every environment gains charm: following your taste and style,  
Tagina has the right solution for every room of your house.*



# Apogeo14

## MANSARDA

APOGEO14/TORTORA 35x35 fondo/17.25x35 fondo/17.25x17.25 fondo





# Apogeo14

APOGEO14/OLD COTTO 17,25x35 fondo



APOGEO14/LIGHT BROWN 35x35 fondo/17,25x35 fondo/17,25 x 35 bordura Lobi a rilievo colorato marrone

# Apogeo14

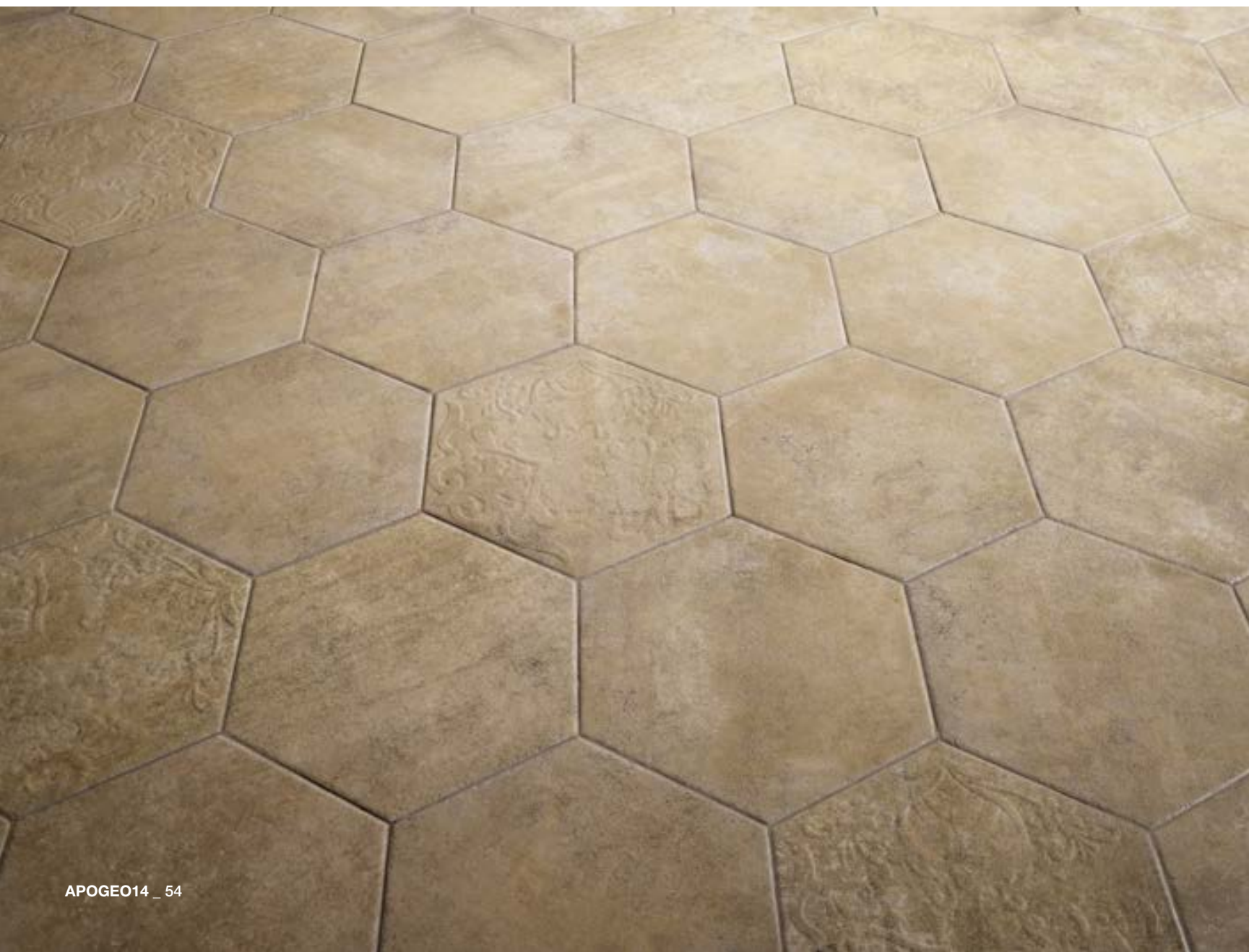


APOGEO14/GOLDEN 35x35/17,25x35/17,25x17,25 fondo

# Apogeo14



APOGEO14/TORTORA L. 19.5 Esagona in tinta/esagona fiore a rilievo



APOGEO14/OLD COTTO L. 19.5 Esagona in tinta/esagona fiore a rilievo

# DECORI/DECORS

---





# Apogeo14

## APOGEO14/DARK BROWN

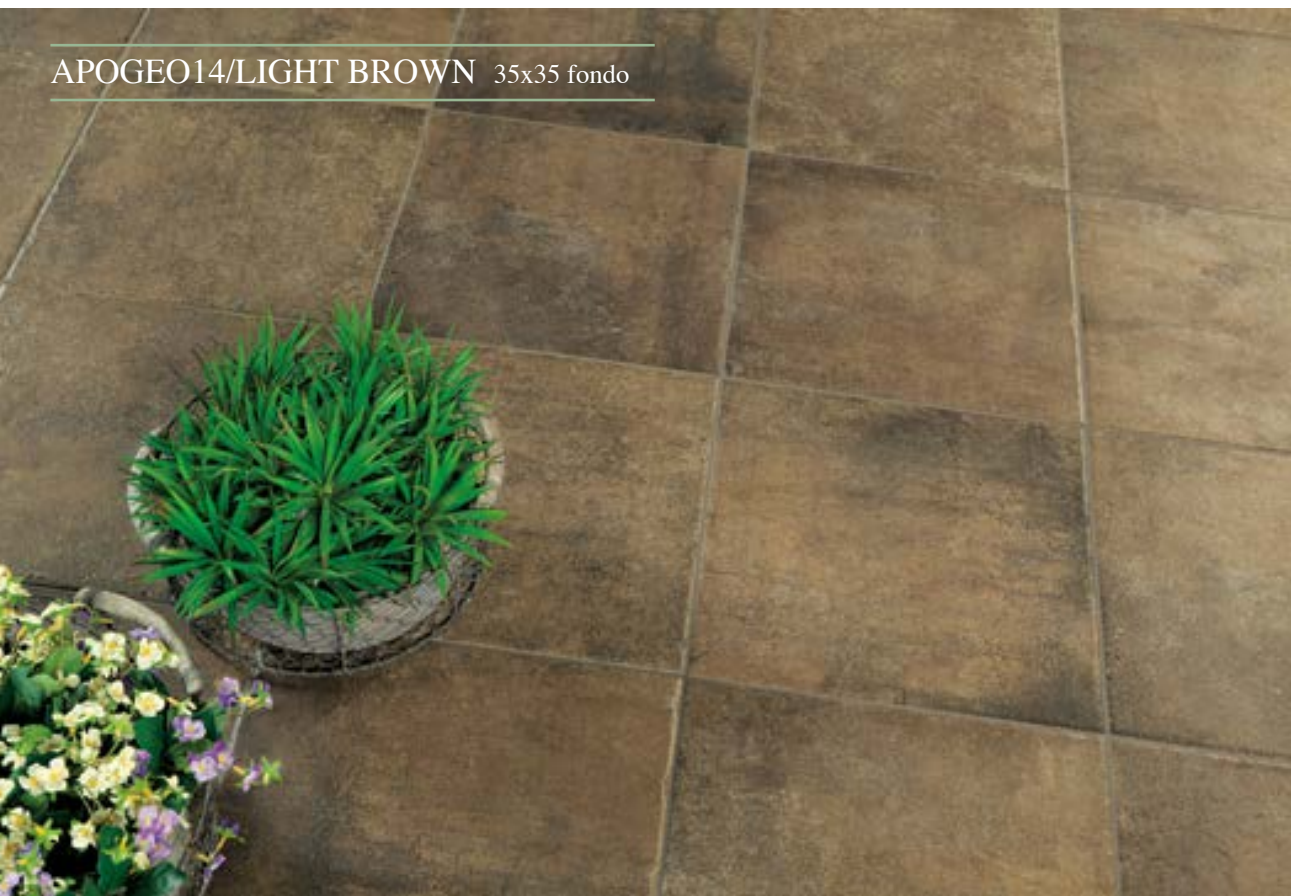
35x35 fondo/17,25x17,25 fondo/ 17,25x35 Bordura Lobi a rilievo colorato marrone



## APOGEO14/DARK BROWN

35x35 fondo/17,25x17,25 fondo  
17,25x35 Bordura Lobi a rilievo colorato marrone  
35x35 Rosone a rilievo colorato marrone  
35x35 Fascia Lobata a rilievo colorato marrone  
35x35 Ang. Rosone a rilievo colorato marrone

# Apogeo14



APOGEO14/LIGHT BROWN 35x35 fondo



APOGEO14/LIGHT BROWN 35x35 fondo/17.25x35/17.25 x 35 bordura Lobi a rilievo colorato marrone





# Apogeo14



---

## APOGEO14/TORTORA

35x35 fondo/17.25x35 Bordura Lobi a rilievo colorato azzurro  
17.25x17.25 Bordura Lobi a rilievo colorato azzurro  
35x35 Ang. Rosone a rilievo colorato azzurro.  
7.5x61 battiscopa

---



Comp. tappeto cm 70x140 (8 pz 35x35):  
35x35 Angolo Rosone/35x35 Fascia Lobata



Comp. tappeto cm 70x70 (4 pz 35x35):  
35x35 Angolo Rosone



Comp. tappeto cm 105x140 (12 pz 35x35):  
35x35 Angolo Rosone/35x35 Fascia Lobata/35x35 Rosone



Comp. tappeto cm 105x105 (9 pz 35x35):  
35x35 Angolo Rosone/35x35 Fascia Lobata/35x35 Rosone

## DECORI "COLORATI"/"COLOURED" DECORS



DECORO A RILIEVO COLORATO  
COLOURED RELIEF DECOR



DECORO PIANO COLORATO  
COLOURED PLAIN DECOR



DECORO A RILIEVO IN TINTA  
PLAIN COLOURED RELIEF DECOR

### AZZURRO (2Q)



35x35  
Angolo Rosone piano colorato 8BD\*\*AP  
Angolo Rosone rilievo colorato 8BD\*\*AR



35x35  
Fascia Lobata piana colorata 8BD\*\*FP  
Fascia Lobata a rilievo colorata 8BD\*\*FR



35x35  
Rosone piano colorato 8BD\*\*RP  
Rosone a rilievo colorato 8BD\*\*RR



17,25x35  
Bordura Lobi piana colorata 8BD\*\*BP  
Bordura Lobi a rilievo colorata 8BD\*\*BR



17,25x17,25  
Ang. Lobi piano colorato 8BD\*\*NP  
Ang. Lobi a rilievo colorato 8BD\*\*NR

### MARRONE (M1)



### VERDE (18)



### ROSSO (07)



## DECORI "IN TINTA"/"PLAIN COLOUR" DECORS

### GREY (06)



35x35  
Angolo Rosone a rilievo in tinta 8BD\*\*AR



35x35  
Fascia Lobata a rilievo in tinta 8BD\*\*FR



35x35  
Rosone a rilievo in tinta 8BD\*\*RR



17,25x35  
Bordura Lobi a rilievo in tinta 8BD\*\*BR



17,25x17,25  
Ang. Lobi a rilievo in tinta 8BD\*\*NR

- Old Cotto (41)
- Anthracite (10)
- Black (14)
- Tortora (5E)
- White(08)
- Grey (06)
- Sunset(SU)
- Golden(F7)
- Dark Brown (8J)
- Light Brown (57)

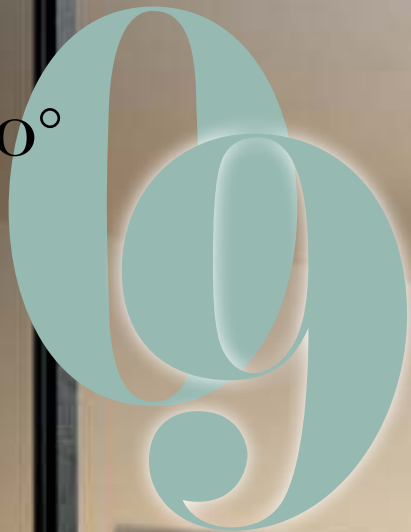


# SUGGESTIONS OUTDOOR

**COMPACT**  
ALTO SPESSORE  
HIGH THICKNESS



no°



# PORTICO PORCH

SOLUZIONE DI CONTINUITÀ  
A SOLUTION OF CONTINUITY

Materiali sicuri e affidabili, lavorati secondo la tradizione artigiana, resistenti a qualsiasi clima, per arredare gli esterni in sintonia con gli spazi interni.

*Safe and reliable materials, manufactured according to the artisan tradition, resistant to any weather condition to furnish the outdoor in syntony with the indoor living spaces.*

IN / OUT



**COMPACT**  
ALTO SPESSORE  
HIGH THICKNESS





46x92  
30x50  
45x90  
90x90  
92x92  
COMPACT

**COMPACT**  
ALTO SPESSORE  
HIGH THICKNESS



# Apogeo14

## PORTICO

APOGEO14/ANTHRACITE 45x90 fondo compact rett./90x90 fondo rett./5x60/10x60/15x60 fondo



no°  
10

## ESTERNO OUTDOOR

SOTTO QUALSIASI CIELO  
UNDER ANY SKY

Pavimenti pensati per valorizzare gli esterni: finiture classiche o contemporanee si armonizzano con lo stile di giardini e piscine e resistono perfettamente a ogni temperatura

*Floor tiles studied to value the outdoors: classical or contemporary finishes are harmonized with the garden or swimming pools style and resist perfectly to any temperature.*



POSA SU GHIAIA E SABBIA  
LAYING ON GRAVEL AND SAND

# Apogeo14

## POOL GARDEN

APOGEO14/GOLDEN 92x92 fondo compact

APOGEO14/GOLDEN 61x61 fondo compact/61x61 fondo/7.5x61 battiscopa







## PEZZI SPECIALI / SPECIAL PIECES

APOGEO14 ANTHRACITE 61x61 Gradino BNose 1-2 lati/46x92 fondo compact/46x92 fondo



APOGEO14/WHITE 61x61 fondo compact/20x30 stone drip

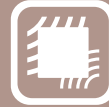


APOGEO14/GRAY 92x92 fondo/61x61 gradino BNose 1 e 2 lati/7,5x61 battiscopa

# SISTEMI DI POSA / LAYING SYSTEM



POSA TRADIZIONALE  
STANDARD LAYING



POSA SU GHIAIA E SABBIA  
LAYING ON GRAVEL AND SAND



POSA SOPRAELEVATA  
RAISED LAYING



POSA SU ERBA  
LAYING ON GRASS



## AVVERTENZE PER POSA SOPRAELEVATA / NOTICE FOR RAISED FLOORS LAYING

Per mantenere i più alti standard qualitativi e garantire una sopraelevazione della piastrella in completa sicurezza, si raccomanda nella posa l'impiego dei piedini supplementari come illustrato nel prospetto seguente:

To maintain the highest quality standards and guarantee the complete safe raising of the tile, we recommend in the laying operations the employment of supplementary supports as illustrated in the following prospect:



FORMATO	H: 0÷10 CM	H: >10 CM
92x92 36"1/4x36"1/4 compact 18 mm	9 PIEDINI (1 centrale)	* Ufficio Tecnico Tagina
90x90 35"7/16x35"7/16		



FORMATO	H: 0÷10 CM	H: >10 CM
46x92 18"1/8x36"1/4 compact 18 mm	6 PIEDINI	* Ufficio Tecnico Tagina
45x90 17"11/16x35"7/16		



FORMATO	H: 0÷10 CM	H: >10 CM
30x90 11"13/16x35"7/16 compact 18 mm	6 PIEDINI	* Ufficio Tecnico Tagina



FORMATO	H: 0÷2 CM	H: >2÷10 CM	H: >10 CM
61x61 24"3/16x24"3/16 compact 20 mm	4 PIEDINI	5 PIEDINI (1 centrale)	* Ufficio Tecnico Tagina
60x60 23"5/8x23"5/8			

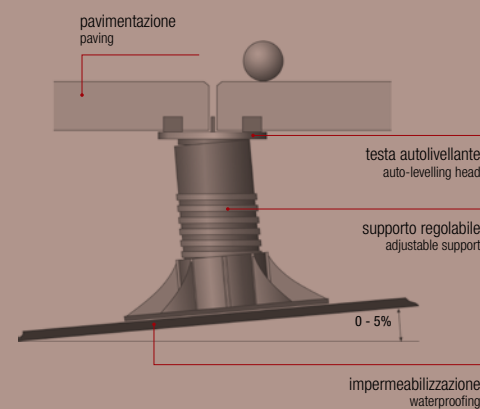
\* Per informazioni concernenti specifiche tecniche relative agli impieghi contrassegnati rivolgersi all'Ufficio Tecnico di Tagina Ceramiche d'Arte Tel.075/9147205

\* For information regarding technical specifications relevant to the employments mentioned, please apply to the Technical Office of Tagina Ceramiche d'Arte 0039 075/9147205

## SISTEMI DI POSA SOPRAELEVATA / RAISED PAVING SYSTEM

Le lastre di finitura Compact si distinguono per l'elevata resistenza allo scivolamento, l'ottima durata nel tempo e l'inalterabilità strutturale in qualsiasi condizione climatica. Il sistema di pavimentazione sopraelevato prevede l'utilizzo di supporti portanti in polipropilene di tipo fisso, regolabile e autolivellante. Il sistema sopraelevato da esterno, con le fughe aperte, consente un facile deflusso dell'acqua piovana evitando ogni rischio di accumolo della stessa. La posa sopraelevata permette il passaggio di impianti di cablaggio e tubazioni strutturali attraverso una pratica fruizione dell'intercapedine tra il piano posato e il piano di supporto. Le lastre sono posabili a secco anche su sabbia, ghiaia, o erba.

*The slabs with the Compact finish differs for the very high anti slip resistance, long-lasting and structural unalterability in any climate condition. The raised paving system is provided with the use of bearing supports in polypropylene fixed or adjustable and auto-levelling. The raised paving system for exterior, with open joints, facilitates an easy draining of rainwater avoiding any risk of build-up of the same. The raised laying allows the passage of wiring and piping systems through a practical fruition of the air space between the laid level and the bottom level. The slabs can be laid without any adhesive also on sand, gravel or grass.*



## I VANTAGGI DEL SISTEMA SOPRAELEVATO / THE ADVANTAGES OF A RAISED PAVING SYSTEM



L'indipendenza della posa dai relativi supporti garantisce un ottimo assorbimento dei movimenti strutturali.  
*The independence of the laying from the relative supports can guarantee an excellent absorption of structural movements.*



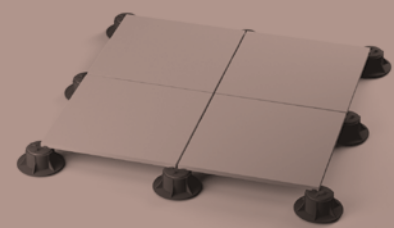
Il sistema sopraelevato non necessita del massetto in calcestruzzo. Tale sistema garantisce una consistente diminuzione del peso sulla struttura portante.  
*The raised system doesn't need any concrete screed coat. Such system guarantees a consistent decrease of weight on the supporting structure.*



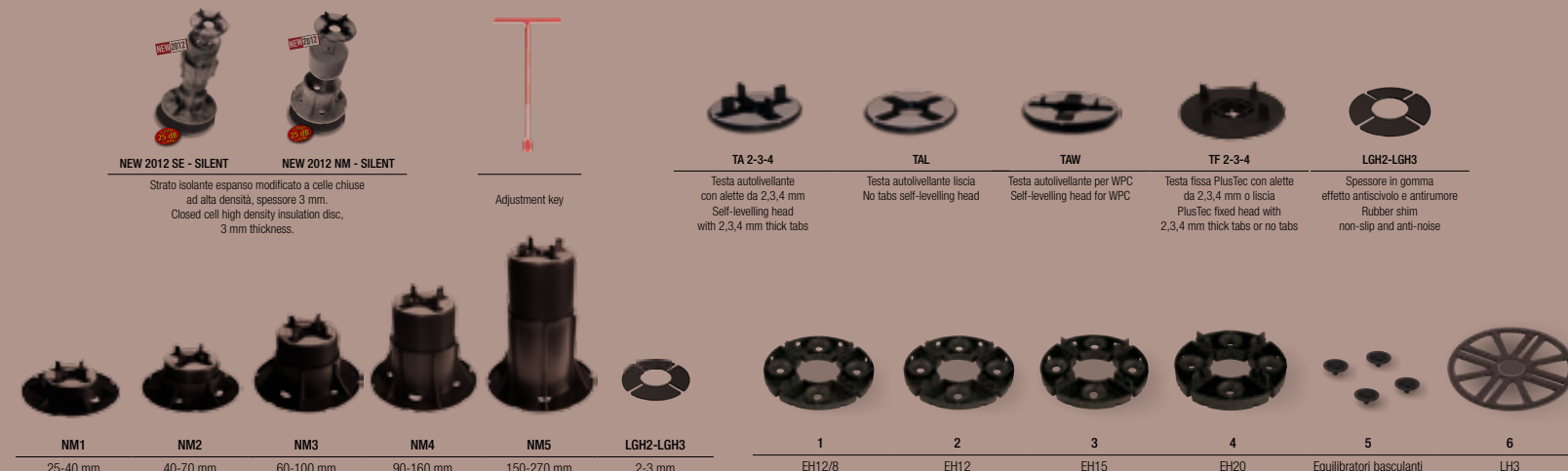
Le fughe tra le piastrelle consentono un efficace deflusso dell'acqua.  
*The joints between the tiles allow a effective draining of water.*



La presenza dell'intercapedine tra la pavimentazione sopraelevata e il piano d'appoggio sottostante favorisce un costante passaggio d'aria, favorendo una maggiore impermeabilizzazione ed un elevato isolamento termico.  
*The presence of the air space between the raised paving and the bottom level allows a constant passage of air favouring a better impermealization and a very high thermal isolation.*

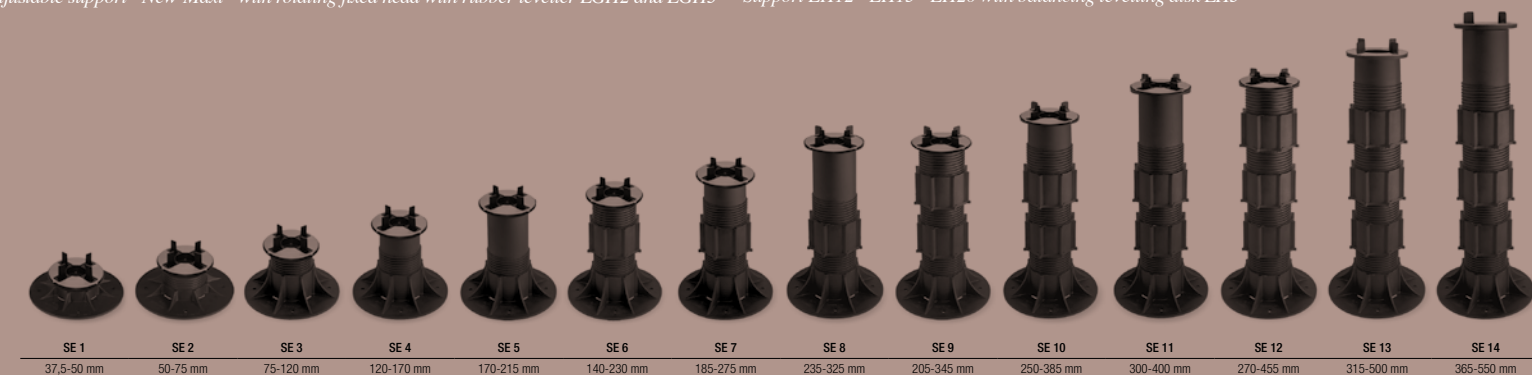


## LA GAMMA COMPLETA / THE COMPLETE RANGE



Supporto regolabile "NEW-MAXI" con testa fissa rotante livellatore in gomma LGH2 e LGH3  
*Adjustable support "New-Maxi" with rotating fixed head with rubber leveller LGH2 and LGH3*

Supporto EH12 - EH15 - EH20 equilibratore basculante disco livellatore LH3  
*Support EH12 - EH15 - EH20 with balancing levelling disk LH3*



Supporto regolabile "Eterno" con testa autolivellante / Adjustable support "eterno" with auto-levelling head

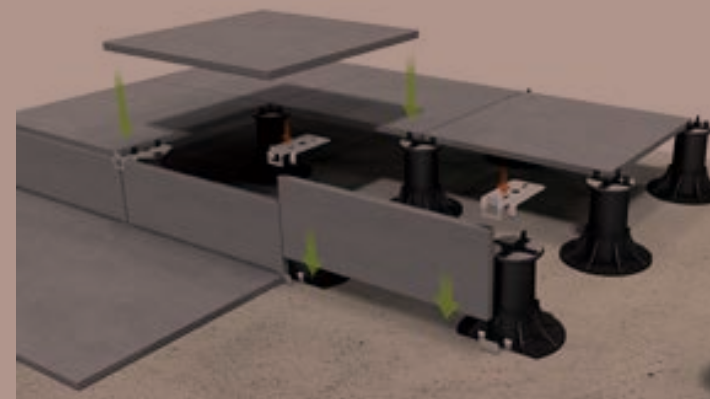
## CLIP BORDO VERTICALE / CLIP FOR VERTICAL CLOSURE

### L'innovazione sicura per 'chiudere in bellezza'

Progettata per far fronte ad un problema comune a tante pavimentazioni esterne, ovvero il tamponamento del bordo quando si è in assenza del muro perimetrale, la clip bordo verticale costituisce un innovativo sistema che permette di chiudere facilmente ed elegantemente lo spazio perimetrale che si crea in presenza di pavimentazioni sopraelevate. Una soluzione composta di due particolari clips in acciaio inox che, messe sopra la testa e sotto la base del supporto Eterno Ivica, creano una sede con dei mordenti che incastrano la porzione di pavimentazione rifilata a misura dello spazio da tamponare, evitando in modo contestuale lo scivolamento delle piastre orizzontali grazie al blocco posto all'estremità della clip bordo pavimento.

### The sure new way of finishing in style

*Our clip for vertical closure is designed to solve a problem typical of many external floors, i.e. how to fill in the gap around the edge when no perimeter wall is present. This solution represents an innovative, easy and elegant way to eliminate gaps around raised floors. The system consists of two special, stainless steel clips for positioning over the head and under the base of the Eterno Ivica support. It creates a firm seat capable of gripping the section of floor cut to size to fill the gap. The use of our floor edge clip effectively prevents horizontal movement in floor slabs.*



## CLIP BORDO PIASTRA / UNIVERSAL EDGE CLIP

### La congiunzione ideale tra estetica e funzionalità

Ideata da Eterno Ivica per evitare il contatto tra piastre e muro perimetrale nelle pavimentazioni sopraelevate da esterno, la clip bordo piastra, costruita interamente in acciaio inox, è dotata di ammortizzatore per le dilatazioni longitudinali e trasversali e di un sicuro aggancio per consentire una fuga perimetrale lineare ed elegante, conferendo al contempo stabilità alla pavimentazione..

### The perfect join: attractive and functional

*Designed by Eterno Ivica to avoid contact between the slabs of outdoor raised floors and outside walls, the universal edge clip is made entirely from stainless steel. It incorporates a damper to absorb longitudinal and transverse thermal expansion and guarantees a secure grip. Use of these clips ensures a stable floor surface with a straight and elegant perimeter.*



# ANTHRACITE (IO) FORMATI / SIZES

Gres Porcellanato / Porcelain Tiles 10 mm



92x92 - 90x90 / 36<sup>11</sup>/<sub>16</sub> x 36<sup>11</sup>/<sub>16</sub> - 35<sup>7</sup>/<sub>16</sub> x 35<sup>7</sup>/<sub>16</sub>  
 92x92 fondo 8BFIO92  
 90x90 fondo rett. 8BFIO90  
 92x92 fondo rigatino 8BFIO92/G  
 90x90 fondo rigatino rettificato 8BFIO90/G



46x92 - 45x90  
 18<sup>1</sup>/<sub>8</sub> x 36<sup>1</sup>/<sub>4</sub> - 17<sup>11</sup>/<sub>16</sub> x 35<sup>7</sup>/<sub>16</sub>  
 46x92 fondo 8BFIO42  
 45x90 f. rett. 8BFIO49  
 46x92 f. rigatino 8BFIO42/G  
 45x90 f. rigatino rett. 8BFIO49/G



30x90  
 11<sup>13</sup>/<sub>16</sub> x 35<sup>7</sup>/<sub>16</sub>  
 fondo rett. 8BFIO39  
 f. rigatino rett. 8BFIO39/G



22,5x90  
 8<sup>7</sup>/<sub>8</sub> x 35<sup>7</sup>/<sub>16</sub>  
 fondo rett. 8BFIO29  
 f. rigatino rett. 8BFIO29/G

# WHITE (08) FORMATI / SIZES

Gres Porcellanato / Porcelain Tiles 10 mm



92x92 - 90x90 / 36<sup>11</sup>/<sub>16</sub> x 36<sup>11</sup>/<sub>16</sub> - 35<sup>7</sup>/<sub>16</sub> x 35<sup>7</sup>/<sub>16</sub>  
 92x92 fondo 8BF0892  
 90x90 fondo rett. 8BF0890  
 92x92 fondo rigatino 8BF0892/G  
 90x90 fondo rigatino rettificato 8BF0890/G



46x92 - 45x90  
 18<sup>1</sup>/<sub>8</sub> x 36<sup>1</sup>/<sub>4</sub> - 17<sup>11</sup>/<sub>16</sub> x 35<sup>7</sup>/<sub>16</sub>  
 46x92 fondo 8BF0842  
 45x90 fondo rett. 8BF0849  
 46x92 f. rigatino 8BF0842/G  
 45x90 f. rigatino rett. 8BF0849/G



30x90  
 11<sup>13</sup>/<sub>16</sub> x 35<sup>7</sup>/<sub>16</sub>  
 fondo rett. 8BF0839  
 f. rigatino rett. 8BF0839/G



22,5x90  
 8<sup>7</sup>/<sub>8</sub> x 35<sup>7</sup>/<sub>16</sub>  
 fondo rett. 8BF0829  
 f. rigatino rett. 8BF0829/G



61x61 - 60x60  
 24<sup>3</sup>/<sub>16</sub> x 24<sup>3</sup>/<sub>16</sub> - 23<sup>5</sup>/<sub>8</sub> x 23<sup>5</sup>/<sub>8</sub>  
 fondo 8BFIO61  
 fondo rett. 8BFIO60



30,5x61 - 30x60  
 12<sup>1</sup>/<sub>2</sub> x 24<sup>3</sup>/<sub>16</sub>  
 11<sup>13</sup>/<sub>16</sub> x 23<sup>5</sup>/<sub>8</sub>  
 30,5x61 fondo 8BFIO36  
 30x60 fondo rett. 8BFIO63  
 30,5x61 f. rigatino 8BFIO36/G  
 30x60 f. rigatino rett. 8BFIO63/G



30X30  
 11<sup>13</sup>/<sub>16</sub> x 11<sup>13</sup>/<sub>16</sub>  
 fondo rett. 8BFIO30



15x60 / 5<sup>7</sup>/<sub>8</sub> x 23<sup>5</sup>/<sub>8</sub>  
 fondo 8BFIO65



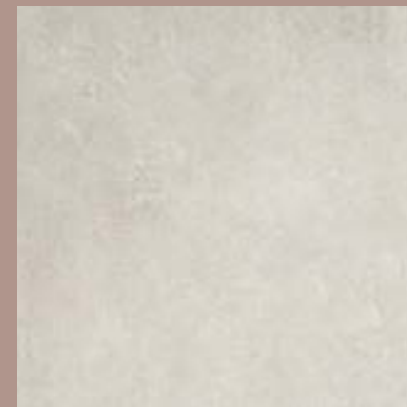
10x60 / 3<sup>15</sup>/<sub>16</sub> x 23<sup>5</sup>/<sub>8</sub>  
 fondo 8BFIO16



5x60 / 1<sup>15</sup>/<sub>16</sub> x 23<sup>5</sup>/<sub>8</sub>  
 fondo 8BFIO56



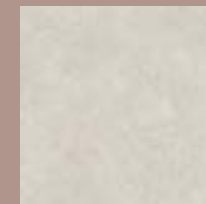
7,5x61 - 7,5x60  
 2<sup>15</sup>/<sub>16</sub> x 24<sup>3</sup>/<sub>16</sub> - 2<sup>15</sup>/<sub>16</sub> x 23<sup>5</sup>/<sub>8</sub>  
 battiscopa 8BDIOBA  
 battiscopa rett. 8BDIOBA/R



61x61 - 60x60  
 24<sup>3</sup>/<sub>16</sub> x 24<sup>3</sup>/<sub>16</sub> - 23<sup>5</sup>/<sub>8</sub> x 23<sup>5</sup>/<sub>8</sub>  
 fondo 8BF0861  
 fondo rett. 8BF0860



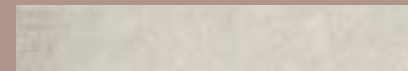
30,5x61 - 30x60  
 12<sup>1</sup>/<sub>2</sub> x 24<sup>3</sup>/<sub>16</sub>  
 11<sup>13</sup>/<sub>16</sub> x 23<sup>5</sup>/<sub>8</sub>  
 30,5x61 fondo 8BF0836  
 30x60 fondo rett. 8BF0863  
 30,5x61 f. rigatino 8BF0836/G  
 30x60 f. rigatino rett. 8BF0863/G



30X30  
 11<sup>13</sup>/<sub>16</sub> x 11<sup>13</sup>/<sub>16</sub>  
 fondo rett. 8BF0830



15x60 / 5<sup>7</sup>/<sub>8</sub> x 23<sup>5</sup>/<sub>8</sub>  
 fondo 8BF0865



10x60 / 3<sup>15</sup>/<sub>16</sub> x 23<sup>5</sup>/<sub>8</sub>  
 fondo 8BF0816



5x60 / 1<sup>15</sup>/<sub>16</sub> x 23<sup>5</sup>/<sub>8</sub>  
 fondo 8BF0856



7,5x61 - 7,5x60  
 2<sup>15</sup>/<sub>16</sub> x 24<sup>3</sup>/<sub>16</sub> - 2<sup>15</sup>/<sub>16</sub> x 23<sup>5</sup>/<sub>8</sub>  
 battiscopa 8BD08BA  
 battiscopa rett. 8BD08BA/R



L 19,5 / 7<sup>11</sup>/<sub>16</sub>  
 Esagona in tinta  
 8BFIOES



L 19,5 / 7<sup>11</sup>/<sub>16</sub>  
 Esagona Fiore a rilievo  
 8BFIOEF



35x35 - 13<sup>3</sup>/<sub>4</sub> x 13<sup>3</sup>/<sub>4</sub>  
 fondo 8BFIO35



17,25x35 / 6<sup>13</sup>/<sub>16</sub> x 13<sup>3</sup>/<sub>4</sub>  
 fondo 8BFIO13



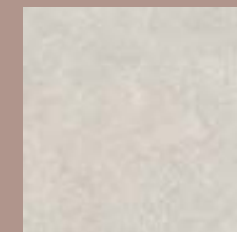
17,25x17,25 / 6<sup>13</sup>/<sub>16</sub> x 6<sup>13</sup>/<sub>16</sub>  
 fondo 8BFIO17



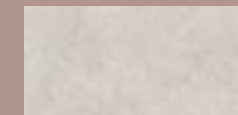
L 19,5 / 7<sup>11</sup>/<sub>16</sub>  
 Esagona in tinta  
 8BF08ES



L 19,5 / 7<sup>11</sup>/<sub>16</sub>  
 Esagona Fiore a rilievo  
 8BF08EF



35x35 - 13<sup>3</sup>/<sub>4</sub> x 13<sup>3</sup>/<sub>4</sub>  
 fondo 8BF0835



17,25x35 / 6<sup>13</sup>/<sub>16</sub> x 13<sup>3</sup>/<sub>4</sub>  
 fondo 8BF0813



17,25x17,25 / 6<sup>13</sup>/<sub>16</sub> x 6<sup>13</sup>/<sub>16</sub>  
 fondo 8BF0817

## GREY (06) FORMATI / SIZES

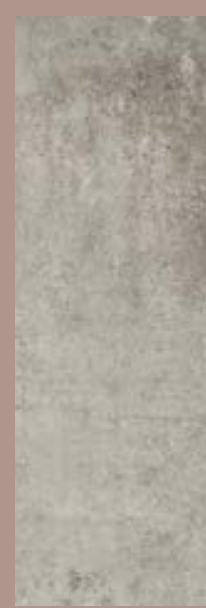
Gres Porcellanato / Porcelain Tiles 10 mm



92x92 - 90x90 /  $36\frac{3}{4} \times 36\frac{3}{4}$  -  $35\frac{7}{16} \times 35\frac{7}{16}$   
 92x92 fondo 8BF0692  
 90x90 fondo rett. 8BF0690  
 92x92 fondo rigatino 8BF0692/G  
 90x90 fondo rigatino rett. 8BF0690/G



46x92 - 45x90  
 $18\frac{1}{8} \times 36\frac{1}{4}$  -  $17\frac{11}{16} \times 35\frac{7}{16}$   
 46x92 fondo 8BF0642  
 45x90 f. rett. 8BF0649  
 46x92 f. rigatino 8BF0642/G  
 45x90 f. rigatino rett. 8BF0649/G



30x90  
 $11\frac{13}{16} \times 35\frac{7}{16}$   
 fondo rett. 8BF0639  
 f. rigatino rett. 8BF0639/G



22,5x90  
 $8\frac{7}{8} \times 35\frac{7}{16}$   
 fondo rett. 8BF0629  
 f. rigatino rett. 8BF0629/G



61x61 - 60x60  
 $24\frac{3}{16} \times 24\frac{3}{16}$  -  $23\frac{5}{8} \times 23\frac{5}{8}$   
 fondo 8BF0661  
 fondo rett. 8BF0660



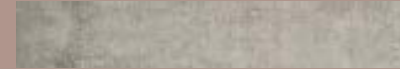
30,5x61 - 30x60  
 $12\frac{1}{2} \times 24\frac{3}{16}$   
 $11\frac{13}{16} \times 23\frac{5}{8}$   
 30,5x61 fondo 8BF0636  
 30x60 fondo rett. 8BF0663  
 30,5x61 f. rigatino 8BF0636/G  
 30x60 f. rigatino rett. 8BF0663/G



30X30  
 $11\frac{13}{16} \times 11\frac{13}{16}$   
 fondo rett. 8BF0630



15x60 /  $5\frac{7}{8} \times 23\frac{5}{8}$   
 fondo 8BF0665



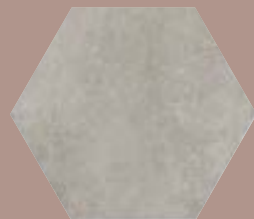
10x60 /  $3\frac{15}{16} \times 23\frac{5}{8}$   
 fondo 8BF0616



5x60 /  $1\frac{15}{16} \times 23\frac{5}{8}$   
 fondo 8BF0656



7,5x61 - 7,5x60  
 $2\frac{15}{16} \times 24\frac{3}{16}$  -  $2\frac{15}{16} \times 23\frac{5}{8}$   
 battiscopa 8BD06BA  
 battiscopa rett. 8BD06BA/R



L 19,5 /  $7\frac{11}{16}$   
 Esagona in tinta  
 8BF06ES



L 19,5 /  $7\frac{11}{16}$   
 Esagona Fiore a rilievo  
 8BF06EF



35x35 -  $13\frac{3}{4} \times 13\frac{3}{4}$   
 fondo 8BF0635



17,25x35 /  $6\frac{13}{16} \times 13\frac{3}{4}$   
 fondo 8BF0613



17,25x17,25 /  $6\frac{13}{16} \times 6\frac{13}{16}$   
 fondo 8BF0617

## BLACK (14) FORMATI / SIZES

Gres Porcellanato / Porcelain Tiles 10 mm



92x92 - 90x90 /  $36\frac{3}{4} \times 36\frac{3}{4}$  -  $35\frac{7}{16} \times 35\frac{7}{16}$   
 92x92 fondo 8BF1492  
 90x90 fondo rett. 8BF1490  
 92x92 fondo rigatino 8BF1492/G  
 90x90 fondo rigatino rett. 8BF1490/G



46x92 - 45x90  
 $18\frac{1}{8} \times 36\frac{1}{4}$  -  $17\frac{11}{16} \times 35\frac{7}{16}$   
 46x92 fondo 8BF1442  
 45x90 fondo rett. 8BF1449  
 46x92 f. rigatino 8BF1442/G  
 45x90 f. rigatino rett. 8BF1449/G



30x90  
 $11\frac{13}{16} \times 35\frac{7}{16}$   
 fondo rett. 8BF1439  
 f. rigatino rett. 8BF1439/G



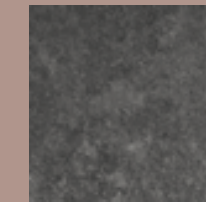
22,5x90  
 $8\frac{7}{8} \times 35\frac{7}{16}$   
 fondo rett. 8BF1429  
 f. rigatino rett. 8BF1429/G



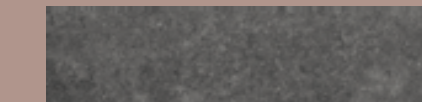
61x61 - 60x60  
 $24\frac{3}{16} \times 24\frac{3}{16}$  -  $23\frac{5}{8} \times 23\frac{5}{8}$   
 fondo 8BF1461  
 fondo rett. 8BF1460



30,5x61 - 30x60  
 $12\frac{1}{2} \times 24\frac{3}{16}$   
 $11\frac{13}{16} \times 23\frac{5}{8}$   
 30,5x61 fondo 8BF1436  
 30x60 fondo rett. 8BF1463  
 30,5x61 f. rigatino 8BF1436/G  
 30x60 f. rigatino rett. 8BF1463/G



30X30  
 $11\frac{13}{16} \times 11\frac{13}{16}$   
 fondo rett. 8BF1430



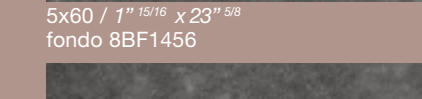
15x60 /  $5\frac{7}{8} \times 23\frac{5}{8}$   
 fondo 8BF1465



10x60 /  $3\frac{15}{16} \times 23\frac{5}{8}$   
 fondo 8BF1416



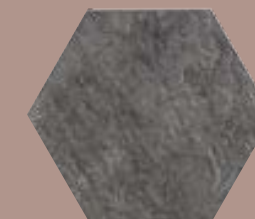
5x60 /  $1\frac{15}{16} \times 23\frac{5}{8}$   
 fondo 8BF1456



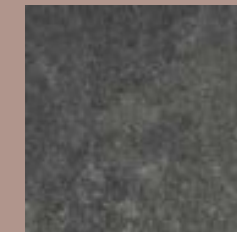
7,5x61 - 7,5x60  
 $2\frac{15}{16} \times 24\frac{3}{16}$  -  $2\frac{15}{16} \times 23\frac{5}{8}$   
 battiscopa 8BD14BA  
 battiscopa rett. 8BD14BA/R



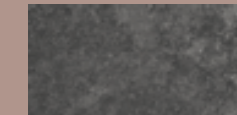
L 19,5 /  $7\frac{11}{16}$   
 Esagona in tinta  
 8BF14ES



L 19,5 /  $7\frac{11}{16}$   
 Esagona Fiore a rilievo  
 8BF14EF



35x35 -  $13\frac{3}{4} \times 13\frac{3}{4}$   
 fondo 8BF1435



17,25x35 /  $6\frac{13}{16} \times 13\frac{3}{4}$   
 fondo 8BF1413



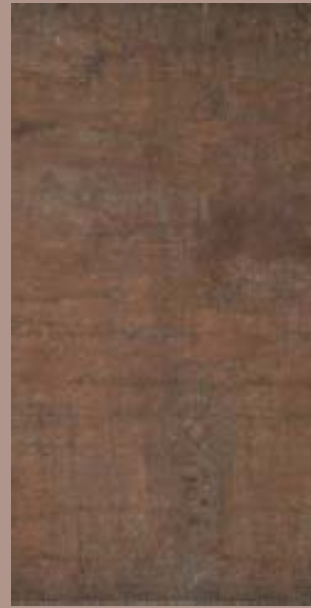
17,25x17,25 /  $6\frac{13}{16} \times 6\frac{13}{16}$   
 fondo 8BF1417

# OLD COTTO (41) FORMATI / SIZES

Gres Porcellanato / Porcelain Tiles 10 mm



92x92 - 90x90 / 36<sup>11</sup>/<sub>16</sub> x 36<sup>11</sup>/<sub>16</sub> - 35<sup>7</sup>/<sub>16</sub> x 35<sup>7</sup>/<sub>16</sub>  
 92x92 fondo 8BF4192  
 90x90 fondo rett. 8BF4190  
 92x92 fondo rigatino 8BF4192/G  
 90x90 fondo rigatino rettificato 8BF4190/G



46x92 - 45x90  
 18<sup>1</sup>/<sub>8</sub> x 36<sup>1</sup>/<sub>4</sub> - 17<sup>11</sup>/<sub>16</sub> x 35<sup>7</sup>/<sub>16</sub>  
 46x92 fondo 8BF4142  
 45x90 f. rett. 8BF4149  
 46x92 f. rigatino 8BF4142/G  
 45x90 f. rigatino rett. 8BF4149/G



30x90  
 11<sup>13</sup>/<sub>16</sub> x 35<sup>7</sup>/<sub>16</sub>  
 fondo rett. 8BF4139  
 f. rigatino rett. 8BF4139/G



22,5x90  
 8<sup>7</sup>/<sub>8</sub> x 35<sup>7</sup>/<sub>16</sub>  
 fondo rett. 8BF4129  
 f. rigatino rett. 8BF4129/G

# SUNSET (SU) FORMATI / SIZES

Gres Porcellanato / Porcelain Tiles 10 mm



92x92 - 90x90 / 36<sup>11</sup>/<sub>16</sub> x 36<sup>11</sup>/<sub>16</sub> - 35<sup>7</sup>/<sub>16</sub> x 35<sup>7</sup>/<sub>16</sub>  
 92x92 fondo 8BFSU92  
 90x90 fondo rett. 8BFSU90  
 92x92 fondo rigatino 8BFSU92/G  
 90x90 fondo rigatino rettificato 8BFSU90/G



46x92 - 45x90  
 18<sup>1</sup>/<sub>8</sub> x 36<sup>1</sup>/<sub>4</sub> - 17<sup>11</sup>/<sub>16</sub> x 35<sup>7</sup>/<sub>16</sub>  
 46x92 fondo 8BFSU42  
 45x90 f. rett. 8BFSU49  
 46x92 f. rigatino 8BFSU42/G  
 45x90 f. rigatino rett. 8BFSU49/G



30x90  
 11<sup>13</sup>/<sub>16</sub> x 35<sup>7</sup>/<sub>16</sub>  
 fondo rett. 8BFSU39  
 f. rigatino rett. 8BFSU39/G



22,5x90  
 8<sup>7</sup>/<sub>8</sub> x 35<sup>7</sup>/<sub>16</sub>  
 fondo rett. 8BFSU29  
 f. rigatino rett. 8BFSU29/G



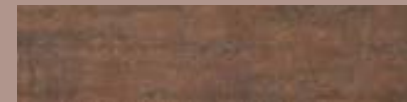
61x61 - 60x60  
 24<sup>3</sup>/<sub>16</sub> x 24<sup>3</sup>/<sub>16</sub> - 23<sup>5</sup>/<sub>8</sub> x 23<sup>5</sup>/<sub>8</sub>  
 fondo 8BF4161  
 fondo rett. 8BF4160



30,5x61 - 30x60  
 12<sup>1</sup>/<sub>2</sub> x 24<sup>3</sup>/<sub>16</sub>  
 11<sup>13</sup>/<sub>16</sub> x 23<sup>5</sup>/<sub>8</sub>  
 30,5x61 fondo 8BF4136  
 30x60 fondo rett. 8BF4163  
 30,5x61 f. rigatino 8BF4136/G  
 30x60 f. rigatino rett. 8BF4163/G



30X30  
 11<sup>13</sup>/<sub>16</sub> x 11<sup>13</sup>/<sub>16</sub>  
 fondo rett. 8BF4130



15x60 / 5<sup>7</sup>/<sub>8</sub> x 23<sup>5</sup>/<sub>8</sub>  
 fondo 8BF4165



10x60 / 3<sup>15</sup>/<sub>16</sub> x 23<sup>5</sup>/<sub>8</sub>  
 fondo 8BF4116



5x60 / 1<sup>15</sup>/<sub>16</sub> x 23<sup>5</sup>/<sub>8</sub>  
 fondo 8BF4156



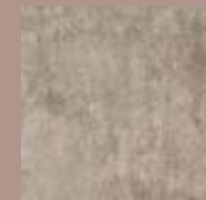
7,5x61 - 7,5x60  
 2<sup>15</sup>/<sub>16</sub> x 24<sup>3</sup>/<sub>16</sub> - 2<sup>15</sup>/<sub>16</sub> x 23<sup>5</sup>/<sub>8</sub>  
 battiscopa 8BD41BA  
 battiscopa rett. 8BD41BA/R



61x61 - 60x60  
 24<sup>3</sup>/<sub>16</sub> x 24<sup>3</sup>/<sub>16</sub> - 23<sup>5</sup>/<sub>8</sub> x 23<sup>5</sup>/<sub>8</sub>  
 fondo 8BFSU61  
 fondo rett. 8BFSU60



30,5x61 - 30x60  
 12<sup>1</sup>/<sub>2</sub> x 24<sup>3</sup>/<sub>16</sub>  
 11<sup>13</sup>/<sub>16</sub> x 23<sup>5</sup>/<sub>8</sub>  
 30,5x61 fondo 8BFSU36  
 30x60 fondo rett. 8BFSU63  
 30,5x61 f. rigatino 8BFSU36/G  
 30x60 f. rigatino rett. 8BFSU63/G



30X30  
 11<sup>13</sup>/<sub>16</sub> x 11<sup>13</sup>/<sub>16</sub>  
 fondo rett. 8BFSU30



15x60 / 5<sup>7</sup>/<sub>8</sub> x 23<sup>5</sup>/<sub>8</sub>  
 fondo 8BFSU65



10x60 / 3<sup>15</sup>/<sub>16</sub> x 23<sup>5</sup>/<sub>8</sub>  
 fondo 8BFSU16



5x60 / 1<sup>15</sup>/<sub>16</sub> x 23<sup>5</sup>/<sub>8</sub>  
 fondo 8BFSU56



7,5x61 - 7,5x60  
 2<sup>15</sup>/<sub>16</sub> x 24<sup>3</sup>/<sub>16</sub> - 2<sup>15</sup>/<sub>16</sub> x 23<sup>5</sup>/<sub>8</sub>  
 battiscopa 8BDSUBA  
 battiscopa rett. 8BDSUBA/R



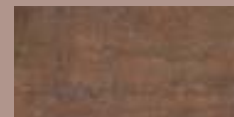
L 19,5 / 7<sup>11</sup>/<sub>16</sub>  
 Esagona in tinta 8BF41ES



L 19,5 / 7<sup>11</sup>/<sub>16</sub>  
 Esagona Fiore a rilievo 8BF41EF



35x35 - 13<sup>3</sup>/<sub>4</sub> x 13<sup>3</sup>/<sub>4</sub>  
 fondo 8BF4135



17,25x35 / 6<sup>13</sup>/<sub>16</sub> x 13<sup>3</sup>/<sub>4</sub>  
 fondo 8BF4113



17,25x17,25 / 6<sup>13</sup>/<sub>16</sub> x 6<sup>13</sup>/<sub>16</sub>  
 fondo 8BF4117



L 19,5 / 7<sup>11</sup>/<sub>16</sub>  
 Esagona in tinta 8BFSUES



L 19,5 / 7<sup>11</sup>/<sub>16</sub>  
 Esagona Fiore a rilievo 8BFSUEF



35x35 - 13<sup>3</sup>/<sub>4</sub> x 13<sup>3</sup>/<sub>4</sub>  
 fondo 8BFSU35



17,25x35 / 6<sup>13</sup>/<sub>16</sub> x 13<sup>3</sup>/<sub>4</sub>  
 fondo 8BFSU13



17,25x17,25 / 6<sup>13</sup>/<sub>16</sub> x 6<sup>13</sup>/<sub>16</sub>  
 fondo 8BFSU17

## TORTORA (5E) FORMATI / SIZES

Gres Porcellanato / Porcelain Tiles 10 mm



92x92 - 90x90 / 36<sup>11</sup>/<sub>16</sub> x 36<sup>11</sup>/<sub>16</sub> - 35<sup>7</sup>/<sub>16</sub> x 35<sup>7</sup>/<sub>16</sub>  
 92x92 fondo 8BF5E92  
 90x90 fondo rett. 8BF5E90  
 92x92 fondo rigatino 8BF5E92/G  
 90x90 fondo rigatino rettificato 8BF5E90/G



46x92 - 45x90  
 18<sup>1</sup>/<sub>8</sub> x 36<sup>1</sup>/<sub>4</sub> - 17<sup>11</sup>/<sub>16</sub> x 35<sup>7</sup>/<sub>16</sub>  
 46x92 fondo 8BF5E42  
 45x90 f. rett. 8BF5E49  
 46x92 f. rigatino 8BF5E42/G  
 45x90 f. rigatino rett. 8BF5E49/G



30x90  
 11<sup>13</sup>/<sub>16</sub> x 35<sup>7</sup>/<sub>16</sub>  
 fondo rett. 8BF5E39  
 f. rigatino rett. 8BF5E39/G



22,5x90  
 8<sup>7</sup>/<sub>8</sub> x 35<sup>7</sup>/<sub>16</sub>  
 fondo rett. 8BF5E29  
 f. rigatino rett. 8BF5E29/G

## DARK BROWN (8J) FORMATI / SIZES

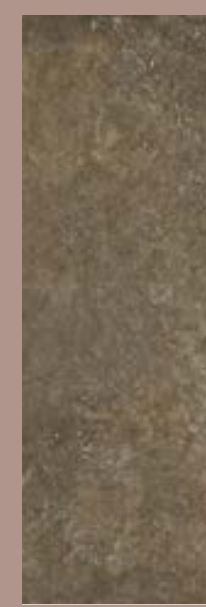
Gres Porcellanato / Porcelain Tiles 10 mm



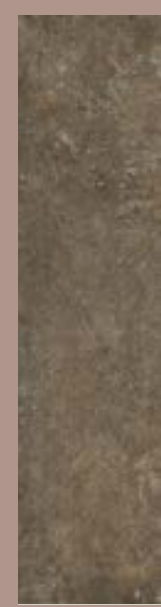
92x92 - 90x90 / 36<sup>11</sup>/<sub>16</sub> x 36<sup>11</sup>/<sub>16</sub> - 35<sup>7</sup>/<sub>16</sub> x 35<sup>7</sup>/<sub>16</sub>  
 92x92 fondo 8BF8J92  
 90x90 fondo rett. 8BF8J90  
 92x92 fondo rigatino 8BF8J92/G  
 90x90 fondo rigatino rettificato 8BF8J90/G



46x92 - 45x90  
 18<sup>1</sup>/<sub>8</sub> x 36<sup>1</sup>/<sub>4</sub> - 17<sup>11</sup>/<sub>16</sub> x 35<sup>7</sup>/<sub>16</sub>  
 46x92 fondo 8BF8J42  
 45x90 f. rett. rett. 8BF8J49  
 46x92 f. rigatino 8BF8J42/G  
 45x90 f. rigatino rett. 8BF8J49/G



30x90  
 11<sup>13</sup>/<sub>16</sub> x 35<sup>7</sup>/<sub>16</sub>  
 fondo rett. 8BF8J39  
 f. rigatino rett. 8BF8J39/G



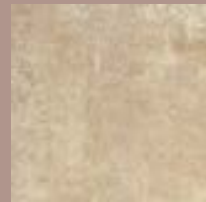
22,5x90  
 8<sup>7</sup>/<sub>8</sub> x 35<sup>7</sup>/<sub>16</sub>  
 fondo rett. 8BF8J29  
 f. rigatino rett. 8BF8J29/G



61x61 - 60x60  
 24<sup>3</sup>/<sub>16</sub> x 24<sup>3</sup>/<sub>16</sub> - 23<sup>5</sup>/<sub>8</sub> x 23<sup>5</sup>/<sub>8</sub>  
 fondo 8BF5E61  
 fondo rett. 8BF5E60



30,5x61 - 30x60  
 12<sup>1</sup>/<sub>2</sub> x 24<sup>3</sup>/<sub>16</sub>  
 11<sup>13</sup>/<sub>16</sub> x 23<sup>5</sup>/<sub>8</sub>  
 30,5x61 fondo 8BF5E36  
 30x60 fondo rett. 8BF5E63  
 30,5x61 f. rigatino 8BF5E36/G  
 30x60 f. rigatino rett. 8BF5E63/G



30X30  
 11<sup>13</sup>/<sub>16</sub> x 11<sup>13</sup>/<sub>16</sub>  
 fondo rett. 8BF5E30



15x60 / 5<sup>7</sup>/<sub>8</sub> x 23<sup>5</sup>/<sub>8</sub>  
 fondo 8BF5E65



10x60 / 3<sup>15</sup>/<sub>16</sub> x 23<sup>5</sup>/<sub>8</sub>  
 fondo 8BF5E16



5x60 / 1<sup>15</sup>/<sub>16</sub> x 23<sup>5</sup>/<sub>8</sub>  
 fondo 8BF5E56



7,5x61 - 7,5x60  
 2<sup>15</sup>/<sub>16</sub> x 24<sup>3</sup>/<sub>16</sub> - 2<sup>15</sup>/<sub>16</sub> x 23<sup>5</sup>/<sub>8</sub>  
 battiscopa 8BD5EBA  
 battiscopa rett. 8BD5EBA/R



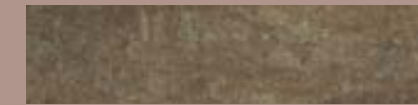
61x61 - 60x60  
 24<sup>3</sup>/<sub>16</sub> x 24<sup>3</sup>/<sub>16</sub> - 23<sup>5</sup>/<sub>8</sub> x 23<sup>5</sup>/<sub>8</sub>  
 fondo 8BF8J61  
 fondo rett. 8BF8J60



30,5x61 - 30x60  
 12<sup>1</sup>/<sub>2</sub> x 24<sup>3</sup>/<sub>16</sub>  
 11<sup>13</sup>/<sub>16</sub> x 23<sup>5</sup>/<sub>8</sub>  
 30,5x61 fondo 8BF8J36  
 30x60 fondo rett. 8BF8J63  
 30,5x61 f. rigatino 8BF8J36/G  
 30x60 f. rigatino rett. 8BF8J63/G



30X30  
 11<sup>13</sup>/<sub>16</sub> x 11<sup>13</sup>/<sub>16</sub>  
 fondo rett. 8BF8J30



15x60 / 5<sup>7</sup>/<sub>8</sub> x 23<sup>5</sup>/<sub>8</sub>  
 fondo 8BF8J65



10x60 / 3<sup>15</sup>/<sub>16</sub> x 23<sup>5</sup>/<sub>8</sub>  
 fondo 8BF8J16



5x60 / 1<sup>15</sup>/<sub>16</sub> x 23<sup>5</sup>/<sub>8</sub>  
 fondo 8BF8J56



7,5x61 - 7,5x60  
 2<sup>15</sup>/<sub>16</sub> x 24<sup>3</sup>/<sub>16</sub> - 2<sup>15</sup>/<sub>16</sub> x 23<sup>5</sup>/<sub>8</sub>  
 battiscopa 8BD8JBA  
 battiscopa rett. 8BD8JBA/R



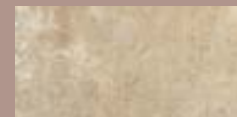
L 19,5 / 7<sup>11</sup>/<sub>16</sub>  
 Esagona in tinta  
 8BF5EES



L 19,5 / 7<sup>11</sup>/<sub>16</sub>  
 Esagona Fiore a rilievo  
 8BF5EEF



35x35 - 13<sup>3</sup>/<sub>4</sub> x 13<sup>3</sup>/<sub>4</sub>  
 fondo 8BF5E35



17,25x35 / 6<sup>13</sup>/<sub>16</sub> x 13<sup>3</sup>/<sub>4</sub>  
 fondo 8BF5E13



17,25x17,25 / 6<sup>13</sup>/<sub>16</sub> x 6<sup>13</sup>/<sub>16</sub>  
 fondo 8BF5E17



L 19,5 / 7<sup>11</sup>/<sub>16</sub>  
 Esagona in tinta  
 8BF8JES



L 19,5 / 7<sup>11</sup>/<sub>16</sub>  
 Esagona Fiore a rilievo  
 8BF8JEF



35x35 - 13<sup>3</sup>/<sub>4</sub> x 13<sup>3</sup>/<sub>4</sub>  
 fondo 8BF8J35



17,25x35 / 6<sup>13</sup>/<sub>16</sub> x 13<sup>3</sup>/<sub>4</sub>  
 fondo 8BF8J13



17,25x17,25 / 6<sup>13</sup>/<sub>16</sub> x 6<sup>13</sup>/<sub>16</sub>  
 fondo 8BF8J17

# GOLDEN (F7) FORMATI / SIZES

Gres Porcellanato / Porcelain Tiles 10 mm



92x92 - 90x90 / 36<sup>11</sup>/<sub>16</sub> x 36<sup>11</sup>/<sub>16</sub> - 35<sup>7</sup>/<sub>16</sub> x 35<sup>7</sup>/<sub>16</sub>  
 92x92 fondo 8BFF792  
 90x90 fondo rett. 8BFF790  
 92x92 fondo rigatino 8BFF792/G  
 90x90 fondo rigatino rettificato 8BFF790/G



46x92 - 45x90  
 18<sup>1</sup>/<sub>8</sub> x 36<sup>11</sup>/<sub>16</sub> - 17<sup>11</sup>/<sub>16</sub> x 35<sup>7</sup>/<sub>16</sub>  
 46x92 fondo 8BFF742  
 45x90 f. rett. 8BFF749  
 46x92 f. rigatino 8BFF742/G  
 45x90 f. rigatino rett. 8BFF749/G



30x90  
 11<sup>13</sup>/<sub>16</sub> x 35<sup>7</sup>/<sub>16</sub>  
 fondo rett. 8BFF739  
 f. rigatino rett. 8BFF739/G



22,5x90  
 8<sup>7</sup>/<sub>8</sub> x 35<sup>7</sup>/<sub>16</sub>  
 fondo rett. 8BFF729  
 f. rigatino rett. 8BFF729/G

# LIGHT BROWN (57) FORMATI / SIZES

Gres Porcellanato / Porcelain Tiles 10 mm



92x92 - 90x90 / 36<sup>11</sup>/<sub>16</sub> x 36<sup>11</sup>/<sub>16</sub> - 35<sup>7</sup>/<sub>16</sub> x 35<sup>7</sup>/<sub>16</sub>  
 92x92 fondo 8BF5792  
 90x90 fondo rett. 8BF5790  
 92x92 fondo rigatino 8BF5792/G  
 90x90 fondo rigatino rettificato 8BF5790/G



46x92 - 45x90  
 18<sup>1</sup>/<sub>8</sub> x 36<sup>11</sup>/<sub>16</sub> - 17<sup>11</sup>/<sub>16</sub> x 35<sup>7</sup>/<sub>16</sub>  
 46x92 fondo 8BF5742  
 45x90 f. rett. 8BF5749  
 46x92 f. rigatino 8BF5742/G  
 45x90 f. rigatino rett. 8BF5749/G



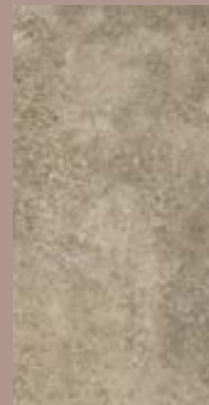
30x90  
 11<sup>13</sup>/<sub>16</sub> x 35<sup>7</sup>/<sub>16</sub>  
 fondo rett. 8BF5739  
 f. rigatino rett. 8BF5739/G



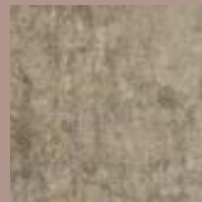
22,5x90  
 8<sup>7</sup>/<sub>8</sub> x 35<sup>7</sup>/<sub>16</sub>  
 fondo rett. 8BF5729  
 f. rigatino rett. 8BF5729/G



61x61 - 60x60  
 24<sup>3</sup>/<sub>16</sub> x 24<sup>3</sup>/<sub>16</sub> - 23<sup>5</sup>/<sub>8</sub> x 23<sup>5</sup>/<sub>8</sub>  
 fondo 8BFF761  
 fondo rett. 8BFF760



30,5x61 - 30x60  
 12<sup>1</sup>/<sub>2</sub> x 24<sup>3</sup>/<sub>16</sub>  
 11<sup>13</sup>/<sub>16</sub> x 23<sup>5</sup>/<sub>8</sub>  
 30,5x61 fondo 8BFF736  
 30x60 fondo rett. 8BFF763  
 30,5x61 f. rigatino 8BFF736/G  
 30x60 f. rigatino rett. 8BFF763/G



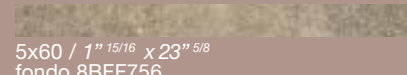
30X30  
 11<sup>13</sup>/<sub>16</sub> x 11<sup>13</sup>/<sub>16</sub>  
 fondo rett. 8BFF730



15x60 / 5<sup>7</sup>/<sub>8</sub> x 23<sup>5</sup>/<sub>8</sub>  
 fondo 8BFF765



10x60 / 3<sup>15</sup>/<sub>16</sub> x 23<sup>5</sup>/<sub>8</sub>  
 fondo 8BFF716



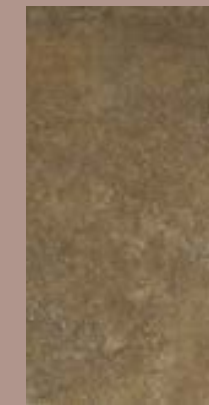
5x60 / 1<sup>15</sup>/<sub>16</sub> x 23<sup>5</sup>/<sub>8</sub>  
 fondo 8BFF756



7,5x61 - 7,5x60  
 2<sup>15</sup>/<sub>16</sub> x 24<sup>3</sup>/<sub>16</sub> - 2<sup>15</sup>/<sub>16</sub> x 23<sup>5</sup>/<sub>8</sub>  
 battiscopa 8BDF7BA  
 battiscopa rett. 8BDF7BA/R



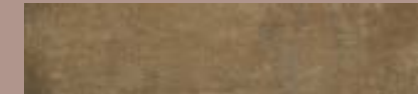
61x61 - 60x60  
 24<sup>3</sup>/<sub>16</sub> x 24<sup>3</sup>/<sub>16</sub> - 23<sup>5</sup>/<sub>8</sub> x 23<sup>5</sup>/<sub>8</sub>  
 fondo 8BF5761  
 fondo rett. 8BF5760



30,5x61 - 30x60  
 12<sup>1</sup>/<sub>2</sub> x 24<sup>3</sup>/<sub>16</sub>  
 11<sup>13</sup>/<sub>16</sub> x 23<sup>5</sup>/<sub>8</sub>  
 30,5x61 fondo 8BF5736  
 30x60 fondo rett. 8BF5763  
 30,5x61 f. rigatino 8BF5736/G  
 30x60 f. rigatino rett. 8BF5763/G



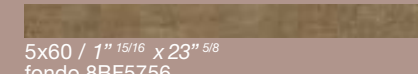
30X30  
 11<sup>13</sup>/<sub>16</sub> x 11<sup>13</sup>/<sub>16</sub>  
 fondo rett. 8BF5730



15x60 / 5<sup>7</sup>/<sub>8</sub> x 23<sup>5</sup>/<sub>8</sub>  
 fondo 8BF5765



10x60 / 3<sup>15</sup>/<sub>16</sub> x 23<sup>5</sup>/<sub>8</sub>  
 fondo 8BF5716



5x60 / 1<sup>15</sup>/<sub>16</sub> x 23<sup>5</sup>/<sub>8</sub>  
 fondo 8BF5756



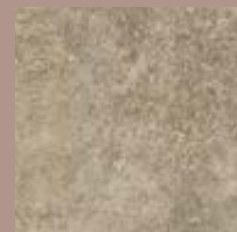
7,5x61 - 7,5x60  
 2<sup>15</sup>/<sub>16</sub> x 24<sup>3</sup>/<sub>16</sub> - 2<sup>15</sup>/<sub>16</sub> x 23<sup>5</sup>/<sub>8</sub>  
 battiscopa 8BD57BA  
 battiscopa rett. 8BD57BA/R



L 19,5 / 7<sup>11</sup>/<sub>16</sub>  
 Esagona in tinta  
 8BFF7ES



L 19,5 / 7<sup>11</sup>/<sub>16</sub>  
 Esagona Fiore a rilievo  
 8BFF7EF



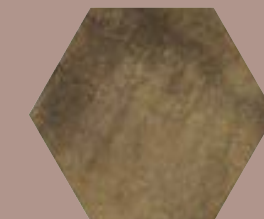
35x35 - 13<sup>3</sup>/<sub>4</sub> x 13<sup>3</sup>/<sub>4</sub>  
 fondo 8BFF735



17,25x35 / 6<sup>13</sup>/<sub>16</sub> x 13<sup>3</sup>/<sub>4</sub>  
 fondo 8BFF713



17,25x17,25 / 6<sup>13</sup>/<sub>16</sub> x 6<sup>13</sup>/<sub>16</sub>  
 fondo 8BFF717



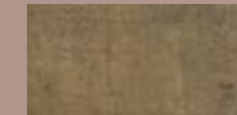
L 19,5 / 7<sup>11</sup>/<sub>16</sub>  
 Esagona in tinta  
 8BF57ES



L 19,5 / 7<sup>11</sup>/<sub>16</sub>  
 Esagona Fiore a rilievo  
 8BF57EF



35x35 - 13<sup>3</sup>/<sub>4</sub> x 13<sup>3</sup>/<sub>4</sub>  
 fondo 8BF5735



17,25x35 / 6<sup>13</sup>/<sub>16</sub> x 13<sup>3</sup>/<sub>4</sub>  
 fondo 8BF5713



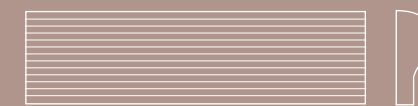
17,25x17,25 / 6<sup>13</sup>/<sub>16</sub> x 6<sup>13</sup>/<sub>16</sub>  
 fondo 8BF5717



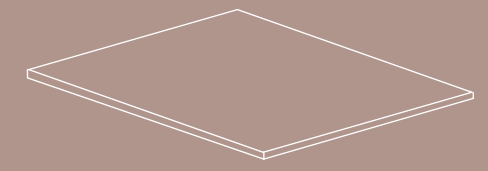
<p>92x92 - 90x90 36<sup>11</sup>/<sub>16</sub> x 36<sup>11</sup>/<sub>16</sub> - 35<sup>7</sup>/<sub>16</sub> 35<sup>7</sup>/<sub>16</sub> x 35<sup>7</sup>/<sub>16</sub></p>  <p><b>ANTHRACITE</b></p> <p>f. compact 8AFIO92 f. compact rett. 8AFIO90/R</p>	<p>46x92 - 45x90 18<sup>1</sup>/<sub>8</sub> x 36<sup>11</sup>/<sub>16</sub> - 35<sup>7</sup>/<sub>16</sub> 17<sup>11</sup>/<sub>16</sub> x 35<sup>7</sup>/<sub>16</sub></p>  <p><b>WHITE</b></p> <p>f. compact 8AFIO49 f. compact rett.8AFIO49/R</p>	<p>30x90 11<sup>13</sup>/<sub>16</sub> x 35<sup>7</sup>/<sub>16</sub></p>  <p><b>GREY</b></p> <p>f. compact rett. 8AFIO39/R</p>	<p>92x92 - 90x90 36<sup>11</sup>/<sub>16</sub> x 36<sup>11</sup>/<sub>16</sub> - 35<sup>7</sup>/<sub>16</sub> 35<sup>7</sup>/<sub>16</sub> x 35<sup>7</sup>/<sub>16</sub></p>  <p><b>BLACK</b></p> <p>f. compact 8AF0892 f. compact rett. 8AF0890/R</p>	<p>46x92 - 45x90 18<sup>1</sup>/<sub>8</sub> x 36<sup>11</sup>/<sub>16</sub> - 35<sup>7</sup>/<sub>16</sub> 17<sup>11</sup>/<sub>16</sub> x 35<sup>7</sup>/<sub>16</sub></p>  <p><b>LIGHT BROWN</b></p> <p>f. compact 8AF0849 f. compact rett.8AF0849/R</p>	<p>30x90 11<sup>13</sup>/<sub>16</sub> x 35<sup>7</sup>/<sub>16</sub></p>  <p><b>SUNSET</b></p> <p>f. compact rett. 8AF0839/R</p>
 <p><b>GREY</b></p> <p>f. compact 8AF0692 f. compact rett. 8AF0690/R</p>	 <p><b>WHITE</b></p> <p>f. compact 8AF0649 f. compact rett.8AF0649/R</p>	 <p><b>GREY</b></p> <p>f. compact rett. 8AF0639/R</p>	 <p><b>BLACK</b></p> <p>f. compact 8AF1492 f. compact rett. 8AF1490/R</p>	 <p><b>LIGHT BROWN</b></p> <p>f. compact 8AF1449 f. compact rett.8AF1449/R</p>	 <p><b>SUNSET</b></p> <p>f. compact rett. 8AF1439/R</p>
 <p><b>OLD COTTO</b></p> <p>f. compact 8AF4192 f. compact rett. 8AF4190/R</p>	 <p><b>BLACK</b></p> <p>f. compact 8AF4149 f. compact rett.8AF4149/R</p>	 <p><b>GREY</b></p> <p>f. compact rett. 8AF4139/R</p>	 <p><b>SUNSET</b></p> <p>f. compact 8AFSU92 f. compact rett. 8AFSU90/R</p>	 <p><b>LIGHT BROWN</b></p> <p>f. compact 8AFSU49 f. compact rett.8AFSU49/R</p>	 <p><b>SUNSET</b></p> <p>f. compact rett. 8AFSU39/R</p>
 <p><b>TORTORA</b></p> <p>f. compact 8AF5E92 f. compact rett. 8AF5E90/R</p>	 <p><b>BLACK</b></p> <p>f. compact 8AF5E49 f. compact rett.8AF5E49/R</p>	 <p><b>GREY</b></p> <p>f. compact rett. 8AF5E39/R</p>	 <p><b>SUNSET</b></p> <p>f. compact 8AF8J92 f. compact rett. 8AF8J90/R</p>	 <p><b>LIGHT BROWN</b></p> <p>f. compact 8AF8J49 f. compact rett.8AF8J49/R</p>	 <p><b>SUNSET</b></p> <p>f. compact rett. 8AF8J39/R</p>
 <p><b>GOLDEN</b></p> <p>f. compact 8AFF792 f. compact rett. 8AFF790/R</p>	 <p><b>BLACK</b></p> <p>f. compact 8AFF749 f. compact rett.8AFF749/R</p>	 <p><b>GREY</b></p> <p>f. compact rett. 8AFF739/R</p>	 <p><b>SUNSET</b></p> <p>f. compact 8AF5792 f. compact rett. 8AF5790/R</p>	 <p><b>LIGHT BROWN</b></p> <p>f. compact 8AF5749 f. compact rett.8AF5749/R</p>	 <p><b>SUNSET</b></p> <p>f. compact rett. 8AF5739/R</p>

<p><b>ANTHRACITE</b></p>  <p>61x61 - 60x60 24<sup>3</sup>/<sub>16</sub> x 24<sup>3</sup>/<sub>16</sub> - 23<sup>5</sup>/<sub>8</sub> x 23<sup>5</sup>/<sub>8</sub> fondo compact 8AFIO61 fondo compact rett. 8AFIO60/R</p>	<p><b>WHITE</b></p>  <p>61x61 - 60x60 24<sup>3</sup>/<sub>16</sub> x 24<sup>3</sup>/<sub>16</sub> - 23<sup>5</sup>/<sub>8</sub> x 23<sup>5</sup>/<sub>8</sub> fondo compact 8AF0861 fondo compact rett. 8AF0860/R</p>	<p><b>GREY</b></p>  <p>61x61 - 60x60 24<sup>3</sup>/<sub>16</sub> x 24<sup>3</sup>/<sub>16</sub> - 23<sup>5</sup>/<sub>8</sub> x 23<sup>5</sup>/<sub>8</sub> fondo compact 8AF0661 fondo compact rett. 8AF0660/R</p>	<p><b>BLACK</b></p>  <p>61x61 - 60x60 24<sup>3</sup>/<sub>16</sub> x 24<sup>3</sup>/<sub>16</sub> - 23<sup>5</sup>/<sub>8</sub> x 23<sup>5</sup>/<sub>8</sub> fondo compact 8AF1461 fondo compact rett. 8AF1460/R</p>	<p><b>OLD COTTO</b></p>  <p>61x61 - 60x60 24<sup>3</sup>/<sub>16</sub> x 24<sup>3</sup>/<sub>16</sub> - 23<sup>5</sup>/<sub>8</sub> x 23<sup>5</sup>/<sub>8</sub> fondo compact 8AF4161 fondo compact rett. 8AF4160/R</p>
<p><b>LIGHT BROWN</b></p>  <p>61x61 - 60x60 24<sup>3</sup>/<sub>16</sub> x 24<sup>3</sup>/<sub>16</sub> - 23<sup>5</sup>/<sub>8</sub> x 23<sup>5</sup>/<sub>8</sub> fondo compact 8AF5761 fondo compact rett. 8AF5760/R</p>	<p><b>TORTORA</b></p>  <p>61x61 - 60x60 24<sup>3</sup>/<sub>16</sub> x 24<sup>3</sup>/<sub>16</sub> - 23<sup>5</sup>/<sub>8</sub> x 23<sup>5</sup>/<sub>8</sub> fondo compact 8AF5E61 fondo compact rett. 8AF5E60/R</p>	<p><b>DARK BROWN</b></p>  <p>61x61 - 60x60 24<sup>3</sup>/<sub>16</sub> x 24<sup>3</sup>/<sub>16</sub> - 23<sup>5</sup>/<sub>8</sub> x 23<sup>5</sup>/<sub>8</sub> fondo compact 8AF8J61 fondo compact rett. 8AF8J60/R</p>	<p><b>GOLDEN</b></p>  <p>61x61 - 60x60 24<sup>3</sup>/<sub>16</sub> x 24<sup>3</sup>/<sub>16</sub> - 23<sup>5</sup>/<sub>8</sub> x 23<sup>5</sup>/<sub>8</sub> fondo compact 8AFF761 fondo compact rett. 8AFF760/R</p>	<p><b>SUNSET</b></p>  <p>61x61 - 60x60 24<sup>3</sup>/<sub>16</sub> x 24<sup>3</sup>/<sub>16</sub> - 23<sup>5</sup>/<sub>8</sub> x 23<sup>5</sup>/<sub>8</sub> fondo compact 8AFSU61 fondo compact rett. 8AFSU60/R</p>

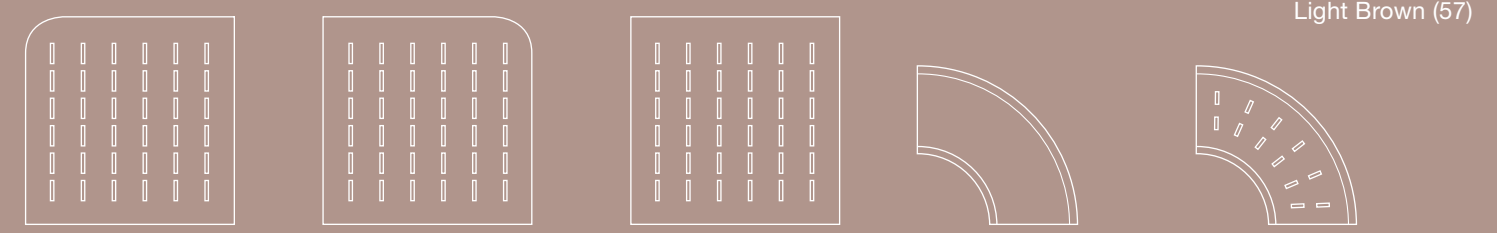
## APOGEO14 PEZZI SPECIALI/SPECIAL PIECES compact 20 mm




17x61 / 6<sup>11</sup>/<sub>16</sub> x 24<sup>3</sup>/<sub>16</sub> stone edge  
(swimming pool edge-bordo piscina) 8AD\*\*SE



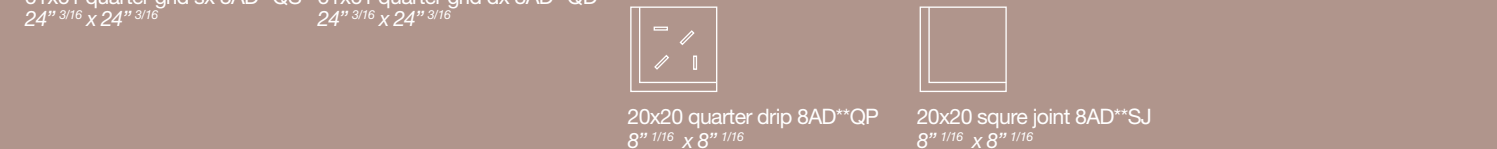
61x61 / 24<sup>3</sup>/<sub>16</sub> x 24<sup>3</sup>/<sub>16</sub> Gradino bull nose 1 lato 8AD\*\*B1  
61x61 / 24<sup>3</sup>/<sub>16</sub> x 24<sup>3</sup>/<sub>16</sub> Ang. Gradino bull nose 2 lati 8AD\*\* B2



61x61 corner grid sx 8AD\*\*SC 24<sup>3</sup>/<sub>16</sub> x 24<sup>3</sup>/<sub>16</sub>    61x61 corner grid dx 8AD\*\*DC 24<sup>3</sup>/<sub>16</sub> x 24<sup>3</sup>/<sub>16</sub>    61x61 stone grid 8AD\*\*SG 24<sup>3</sup>/<sub>16</sub> x 24<sup>3</sup>/<sub>16</sub>    20x51 curved joint 8AD\*\*CJ 8<sup>1</sup>/<sub>16</sub> x 20<sup>3</sup>/<sub>8</sub>    20x51 curver drip joint 8AD\*\*CD 8<sup>1</sup>/<sub>16</sub> x 20<sup>3</sup>/<sub>8</sub>



61x61 quarter grid sx 8AD\*\*QS 24<sup>3</sup>/<sub>16</sub> x 24<sup>3</sup>/<sub>16</sub>    61x61 quarter grid dx 8AD\*\*QD 24<sup>3</sup>/<sub>16</sub> x 24<sup>3</sup>/<sub>16</sub>    20x30 stone drip 8AD\*\*SD 8<sup>1</sup>/<sub>16</sub> x 11<sup>3</sup>/<sub>16</sub>    20x30 linear joint 8AD\*\*LJ 8<sup>1</sup>/<sub>16</sub> x 11<sup>3</sup>/<sub>16</sub>



20x20 quarter drip 8AD\*\*QP 8<sup>1</sup>/<sub>16</sub> x 8<sup>1</sup>/<sub>16</sub>    20x20 square joint 8AD\*\*SJ 8<sup>1</sup>/<sub>16</sub> x 8<sup>1</sup>/<sub>16</sub>

Old Cotto (41)  
Anthracite (10)  
Black (14)  
Tortora (5E)  
White(08)  
Grey (06)  
Sunset(SU)  
Golden(F7)  
Dark Brown (8J)  
Light Brown (57)





[www.tagina.it](http://www.tagina.it)

  
Ceramics of Italy



supermade in italy